



Air Transport Association Monthly Passenger Traffic Exchange

econ@airlines.org

Mar-06

Copyright © 2006 Air Transport Association of America, Inc. All rights reserved. No part of this document may be reproduced or transmitted by any means, electronic or mechanical, including photocopying and recording, or by any information storage or retrieval system, except by companies who purchase this document. Companies who purchase this document may reproduce the data contained in this report. Attribution to ATA would be appreciated. No other intellectual property rights are granted by the foregoing limited license.

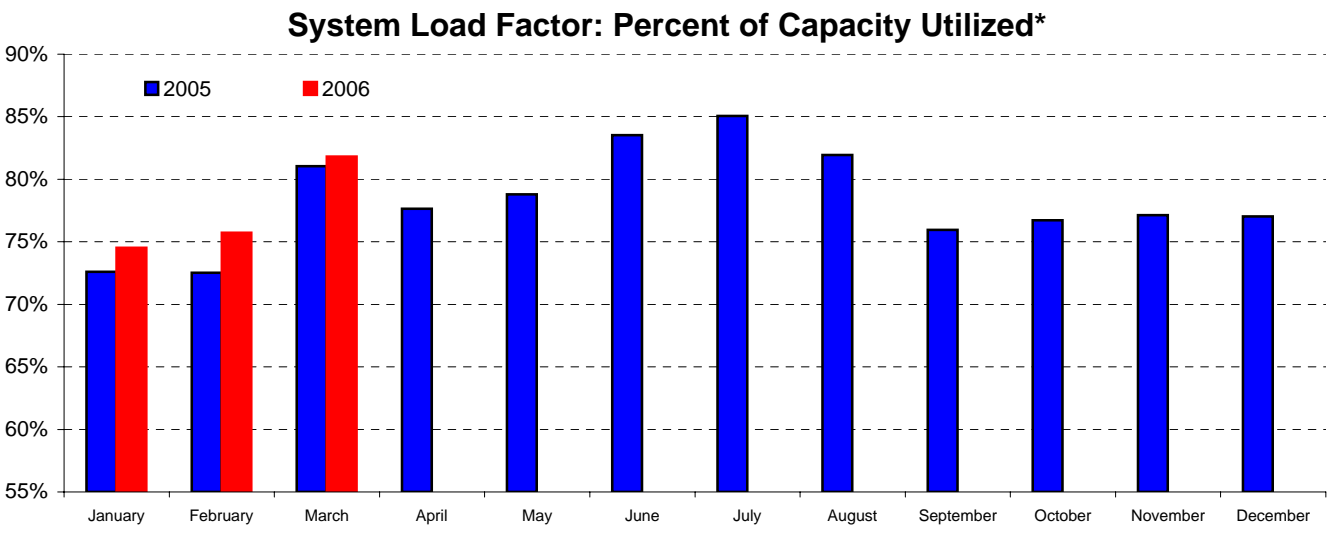
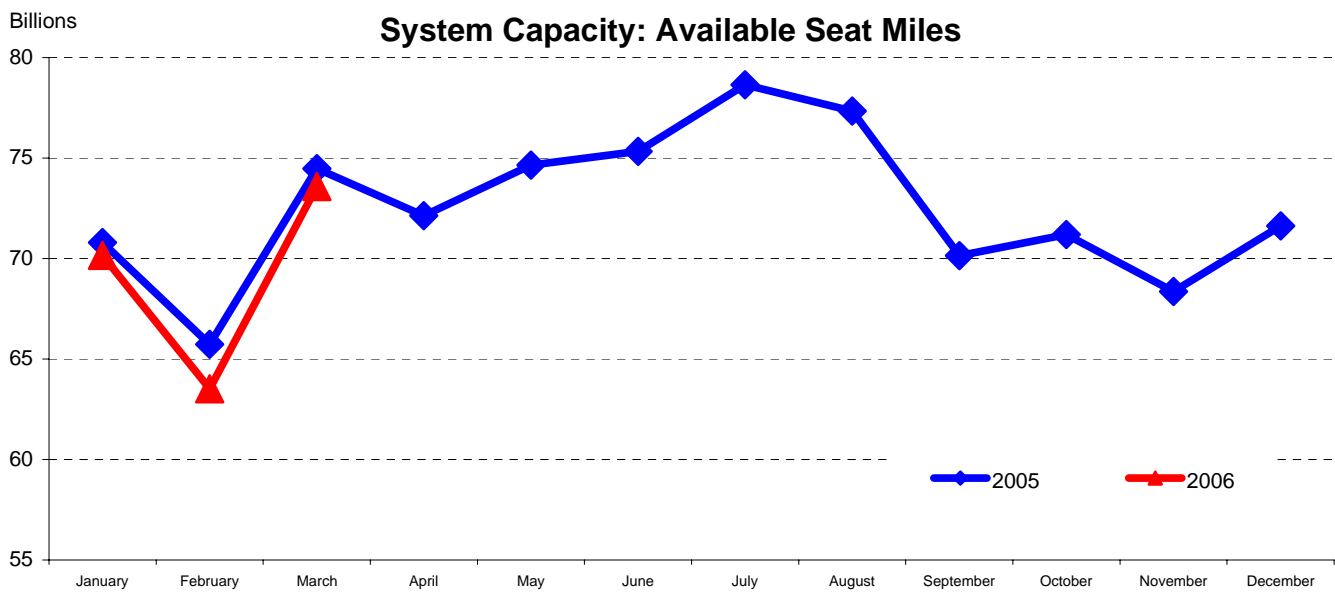
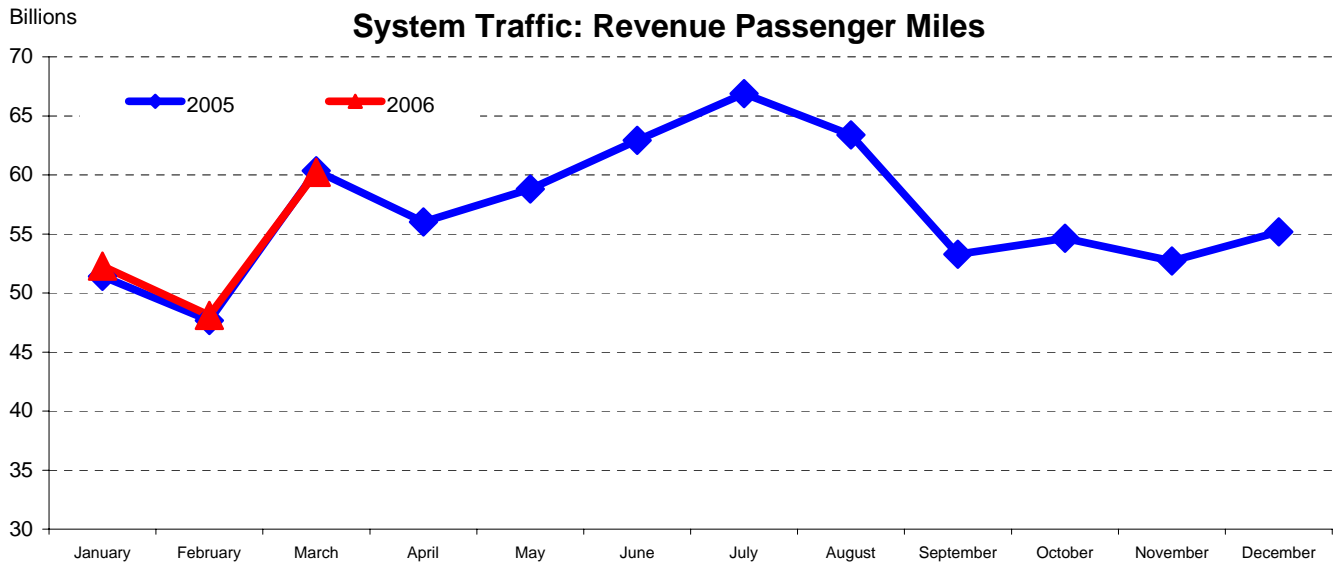


ATA MONTHLY PASSENGER TRAFFIC REPORT
 Scheduled Mainline Service -- ATA U.S. Member Airlines*

	March			Year to Date		
	2006	2005	Change	2006	2005	Change
DOMESTIC						
Departures	390,211	418,161	(6.7%)	1,106,641	1,183,234	(6.5%)
Enplanements (000)	43,036	44,361	(3.0%)	114,533	116,219	(1.5%)
RPMs (000)	42,892,739	43,642,223	(1.7%)	114,315,456	114,320,749	(0.0%)
ASMs (000)	52,363,874	54,167,735	(3.3%)	147,393,191	152,720,245	(3.5%)
LF (%)	81.9	80.6	1.3	77.6	74.9	2.7
ATLANTIC						
Departures	9,320	8,779	6.2%	25,591	24,849	3.0%
Enplanements (000)	1,717	1,683	2.0%	4,341	4,323	0.4%
RPMs (000)	7,254,011	7,075,169	2.5%	18,427,361	18,232,415	1.1%
ASMs (000)	8,948,949	8,331,510	7.4%	24,587,659	23,673,650	3.9%
LF (%)	81.1	84.9	(3.9)	74.9	77.0	(2.1)
LATIN						
Departures	22,935	22,963	(0.1%)	64,788	65,182	(0.6%)
Enplanements (000)	2,862	2,811	1.8%	7,841	7,627	2.8%
RPMs (000)	4,784,057	4,591,593	4.2%	13,286,745	12,805,171	3.8%
ASMs (000)	6,185,333	6,007,880	3.0%	17,698,516	17,312,401	2.2%
LF (%)	77.3	76.4	0.9	75.1	74.0	1.1
PACIFIC						
Departures	6,190	5,884	5.2%	17,699	16,965	4.3%
Enplanements (000)	1,209	1,136	6.4%	3,364	3,209	4.8%
RPMs (000)	5,272,592	5,041,000	4.6%	14,544,858	14,081,718	3.3%
ASMs (000)	6,091,408	5,966,422	2.1%	17,592,728	17,299,393	1.7%
LF (%)	86.6	84.5	2.1	82.7	81.4	1.3
INTERNATIONAL						
Departures	38,445	37,626	2.2%	108,078	106,996	1.0%
Enplanements (000)	5,789	5,630	2.8%	15,545	15,159	2.5%
RPMs (000)	17,310,660	16,707,762	3.6%	46,258,964	45,119,304	2.5%
ASMs (000)	21,225,689	20,305,812	4.5%	59,878,902	58,285,444	2.7%
LF (%)	81.6	82.3	(0.7)	77.3	77.4	(0.2)
SYSTEM						
Departures	428,656	455,787	(6.0%)	1,214,719	1,290,230	(5.9%)
Enplanements (000)	48,825	49,992	(2.3%)	130,078	131,378	(1.0%)
RPMs (000)	60,203,398	60,349,985	(0.2%)	160,574,419	159,440,053	0.7%
ASMs (000)	73,589,563	74,473,547	(1.2%)	207,272,093	211,005,689	(1.8%)
LF (%)	81.8	81.0	0.8	77.5	75.6	1.9

*Aloha, Alaska, American, ATA, Continental, Delta, Hawaiian, JetBlue, Midwest, Northwest, Southwest, United, US Airways (incl. HP)

Notes: Data is preliminary and includes cargo-only operations, which have accounted for fewer than one percent of total departures for this sample since 1981.



*Actual load factor indicates balance between capacity and demand; breakeven load factor not depicted.

ATA MONTHLY PASSENGER TRAFFIC REPORT
Revenue Aircraft Departures

Month	DOMESTIC	Yr/Yr	Atlantic	Yr/Yr	Latin	Yr/Yr	Pacific	Yr/Yr	INTL	Yr/Yr	SYSTEM	Yr/Yr
2005												
January	394,448	(0.6%)	8,460	7.9%	21,857	10.7%	5,832	9.7%	36,149	9.9%	430,597	0.2%
February	370,625	(2.7%)	7,610	4.2%	20,362	9.1%	5,249	4.1%	33,221	7.1%	403,846	(1.9%)
March	418,161	0.7%	8,779	10.2%	22,963	14.6%	5,884	8.5%	37,626	12.6%	455,787	1.6%
April	401,766	(0.2%)	9,071	8.8%	21,542	10.9%	5,715	8.4%	36,328	10.0%	438,094	0.6%
May	410,922	1.0%	10,290	6.9%	20,414	7.5%	5,956	7.3%	36,660	7.3%	447,582	1.5%
June	406,552	(0.7%)	10,592	8.6%	20,887	8.5%	5,870	6.4%	37,349	8.2%	443,901	0.0%
July	418,348	(0.9%)	11,146	9.6%	22,739	7.2%	6,116	4.9%	40,001	7.5%	458,349	(0.2%)
August	416,719	(2.0%)	11,104	9.7%	21,603	3.0%	6,103	7.2%	38,810	5.5%	455,529	(1.4%)
September	375,434	(3.1%)	10,731	10.5%	16,897	8.2%	5,873	7.1%	33,501	8.8%	408,935	(2.2%)
October	385,711	(6.5%)	10,402	7.2%	16,723	0.6%	6,045	8.1%	33,170	3.9%	418,881	(5.8%)
November	374,512	(5.5%)	8,423	1.9%	17,863	(2.8%)	5,874	6.2%	32,160	(0.1%)	406,672	(5.1%)
December	381,376	(7.0%)	8,639	1.3%	21,488	2.8%	6,155	5.9%	36,282	2.9%	417,658	(6.2%)
Total	4,754,574	(2.3%)	115,247	7.4%	245,338	6.8%	70,672	7.0%	431,257	7.0%	5,185,831	(1.6%)
2006												
January	375,538	(4.8%)	8,548	1.0%	21,896	0.2%	6,026	3.3%	36,470	0.9%	412,008	(4.3%)
February	340,892	(8.0%)	7,723	1.5%	19,957	(2.0%)	5,483	4.5%	33,163	(0.2%)	374,055	(7.4%)
March	390,211	(6.7%)	9,320	6.2%	22,935	(0.1%)	6,190	5.2%	38,445	2.2%	428,656	(6.0%)
April	-	-	-	-	-	-	-	-	-	-	-	-
May	-	-	-	-	-	-	-	-	-	-	-	-
June	-	-	-	-	-	-	-	-	-	-	-	-
July	-	-	-	-	-	-	-	-	-	-	-	-
August	-	-	-	-	-	-	-	-	-	-	-	-
September	-	-	-	-	-	-	-	-	-	-	-	-
October	-	-	-	-	-	-	-	-	-	-	-	-
November	-	-	-	-	-	-	-	-	-	-	-	-
December	-	-	-	-	-	-	-	-	-	-	-	-
YTD 2002	1,264,453	(13.1%)	22,404	(19.9%)	50,030	(5.0%)	14,042	(16.0%)	86,476	(11.2%)	1,350,929	(13.0%)
YTD 2003	1,198,684	(5.2%)	23,234	3.7%	53,594	7.1%	15,626	11.3%	92,454	6.9%	1,291,138	(4.4%)
YTD 2004	1,193,001	(0.5%)	23,113	(0.5%)	58,438	9.0%	15,779	1.0%	97,330	5.3%	1,290,331	(0.1%)
YTD 2005	1,183,234	(0.8%)	24,849	7.5%	65,182	11.5%	16,965	7.5%	106,996	9.9%	1,290,230	(0.0%)
YTD 2006	1,106,641	(6.5%)	25,591	3.0%	64,788	(0.6%)	17,699	4.3%	108,078	1.0%	1,214,719	(5.9%)

ATA MONTHLY PASSENGER TRAFFIC REPORT
Revenue Passenger Enplanements (000)

Month	DOMESTIC	Yr/Yr	Atlantic	Yr/Yr	Latin	Yr/Yr	Pacific	Yr/Yr	INTL	Yr/Yr	SYSTEM	Yr/Yr
2005												
January	36,402	6.7%	1,423	10.9%	2,544	16.1%	1,100	7.6%	5,067	12.7%	41,469	7.4%
February	35,456	1.0%	1,217	9.6%	2,273	10.8%	972	4.1%	4,462	8.9%	39,918	1.8%
March	44,361	5.7%	1,683	12.1%	2,811	23.1%	1,136	8.0%	5,630	16.4%	49,992	6.8%
April	41,053	(0.3%)	1,720	9.3%	2,459	11.3%	1,019	9.5%	5,198	10.3%	46,251	0.8%
May	42,655	4.7%	1,964	11.2%	2,269	15.9%	1,128	8.4%	5,360	12.5%	48,015	5.5%
June	44,491	1.5%	2,118	7.3%	2,492	13.9%	1,190	8.8%	5,800	10.4%	50,291	2.4%
July	46,876	2.4%	2,194	9.1%	2,979	12.1%	1,199	7.5%	6,372	10.2%	53,248	3.3%
August	44,285	0.7%	2,023	3.9%	2,719	7.0%	1,200	7.2%	5,942	5.9%	50,228	1.3%
September	37,314	3.6%	1,950	5.7%	1,803	15.4%	1,091	5.5%	4,844	9.1%	42,158	4.2%
October	39,424	(3.4%)	1,837	2.5%	1,900	7.1%	1,115	7.7%	4,853	5.5%	44,276	(2.5%)
November	38,936	(0.3%)	1,537	1.8%	2,114	5.0%	1,078	8.8%	4,729	4.8%	43,665	0.3%
December	38,978	(2.2%)	1,567	0.6%	2,624	10.1%	1,130	7.5%	5,320	6.6%	44,298	(1.2%)
Total	490,230	1.6%	21,233	6.9%	28,985	12.3%	13,360	7.6%	63,578	9.4%	553,808	2.5%
2006												
January	36,437	0.1%	1,421	(0.2%)	2,645	4.0%	1,144	4.0%	5,210	2.8%	41,646	0.4%
February	35,060	(1.1%)	1,203	(1.1%)	2,334	2.7%	1,011	3.9%	4,547	1.9%	39,607	(0.8%)
March	43,036	(3.0%)	1,717	2.0%	2,862	1.8%	1,209	6.4%	5,789	2.8%	48,825	(2.3%)
April	-	-	-	-	-	-	-	-	-	-	-	-
May	-	-	-	-	-	-	-	-	-	-	-	-
June	-	-	-	-	-	-	-	-	-	-	-	-
July	-	-	-	-	-	-	-	-	-	-	-	-
August	-	-	-	-	-	-	-	-	-	-	-	-
September	-	-	-	-	-	-	-	-	-	-	-	-
October	-	-	-	-	-	-	-	-	-	-	-	-
November	-	-	-	-	-	-	-	-	-	-	-	-
December	-	-	-	-	-	-	-	-	-	-	-	-
YTD 2002	110,250	(11.7%)	3,734	(13.0%)	5,431	(2.5%)	2,710	(18.0%)	11,875	(9.8%)	122,125	(11.5%)
YTD 2003	108,237	(1.8%)	3,534	(5.4%)	5,702	5.0%	2,785	2.8%	12,022	1.2%	120,259	(1.5%)
YTD 2004	111,169	2.7%	3,896	10.2%	6,527	14.5%	3,009	8.0%	13,432	11.7%	124,601	3.6%
YTD 2005	116,219	4.5%	4,323	11.0%	7,627	16.8%	3,209	6.6%	15,159	12.9%	131,378	5.4%
YTD 2006	114,533	(1.5%)	4,341	0.4%	7,841	2.8%	3,364	4.8%	15,545	2.5%	130,078	(1.0%)

ATA MONTHLY PASSENGER TRAFFIC REPORT
Revenue Passenger Miles (000)

Month	DOMESTIC	Yr/Yr	Atlantic	Yr/Yr	Latin	Yr/Yr	Pacific	Yr/Yr	INTL	Yr/Yr	SYSTEM	Yr/Yr
2005												
January	36,117,688	7.7%	6,031,387	11.0%	4,390,317	18.6%	4,868,566	11.2%	15,290,270	13.2%	51,407,958	9.3%
February	34,560,838	1.9%	5,125,859	9.8%	3,823,261	12.8%	4,172,153	5.7%	13,121,272	9.3%	47,682,109	3.9%
March	43,642,223	7.0%	7,075,169	12.0%	4,591,593	23.0%	5,041,000	12.3%	16,707,762	14.9%	60,349,985	9.0%
April	40,244,600	0.2%	7,220,683	8.6%	3,986,064	14.2%	4,553,664	13.4%	15,760,412	11.3%	56,005,012	3.1%
May	41,801,557	5.4%	8,216,421	10.3%	3,655,561	16.9%	5,144,445	11.2%	17,016,427	11.9%	58,817,984	7.2%
June	44,676,734	2.3%	8,841,511	6.6%	3,943,103	15.1%	5,470,194	11.4%	18,254,807	9.8%	62,931,541	4.4%
July	47,563,113	2.8%	9,123,338	8.0%	4,735,032	11.4%	5,470,849	11.1%	19,329,220	9.7%	66,892,333	4.7%
August	45,135,361	1.0%	8,437,463	3.2%	4,335,566	5.7%	5,473,818	11.5%	18,246,847	6.2%	63,382,208	2.4%
September	37,044,906	4.4%	8,333,340	8.0%	3,027,070	13.3%	4,882,932	7.6%	16,243,342	8.8%	53,288,248	5.7%
October	38,849,763	(2.0%)	7,614,384	1.9%	3,188,455	7.7%	4,968,825	7.0%	15,771,665	4.6%	54,621,427	(0.2%)
November	38,158,242	1.6%	6,420,466	1.8%	3,493,165	5.7%	4,647,288	6.8%	14,560,918	4.3%	52,719,161	2.3%
December	39,176,167	0.1%	6,618,265	0.9%	4,402,671	9.1%	4,971,237	6.1%	15,992,173	4.7%	55,168,340	1.4%
Total	486,971,193	2.6%	89,058,287	6.7%	47,571,857	12.7%	59,664,970	9.6%	196,295,114	9.0%	683,266,307	4.4%
2006												
January	36,677,179	1.5%	6,058,472	0.4%	4,554,348	3.7%	4,989,881	2.5%	15,602,702	2.0%	52,279,880	1.7%
February	34,745,538	0.5%	5,114,878	(0.2%)	3,948,340	3.3%	4,282,385	2.6%	13,345,602	1.7%	48,091,140	0.9%
March	42,892,739	(1.7%)	7,254,011	2.5%	4,784,057	4.2%	5,272,592	4.6%	17,310,660	3.6%	60,203,398	(0.2%)
April	-	-	-	-	-	-	-	-	-	-	-	-
May	-	-	-	-	-	-	-	-	-	-	-	-
June	-	-	-	-	-	-	-	-	-	-	-	-
July	-	-	-	-	-	-	-	-	-	-	-	-
August	-	-	-	-	-	-	-	-	-	-	-	-
September	-	-	-	-	-	-	-	-	-	-	-	-
October	-	-	-	-	-	-	-	-	-	-	-	-
November	-	-	-	-	-	-	-	-	-	-	-	-
December	-	-	-	-	-	-	-	-	-	-	-	-
YTD 2002	100,455,400	(9.3%)	15,652,044	(14.0%)	9,199,810	(4.5%)	12,109,822	(15.1%)	36,961,676	(12.2%)	137,417,076	(10.1%)
YTD 2003	101,255,713	0.8%	14,829,618	(5.3%)	9,331,618	1.4%	11,985,209	(1.0%)	36,146,445	(2.2%)	137,402,157	(0.0%)
YTD 2004	108,251,742	6.9%	16,416,995	10.7%	10,823,869	16.0%	12,811,128	6.9%	40,051,993	10.8%	148,303,735	7.9%
YTD 2005	114,320,749	5.6%	18,232,415	11.1%	12,805,171	18.3%	14,081,718	9.9%	45,119,304	12.7%	159,440,053	7.5%
YTD 2006	114,315,456	(0.0%)	18,427,361	1.1%	13,286,745	3.8%	14,544,858	3.3%	46,258,964	2.5%	160,574,419	0.7%

ATA MONTHLY PASSENGER TRAFFIC REPORT
Available Seat Miles (000)

Month	DOMESTIC	Yr/Yr	Atlantic	Yr/Yr	Latin	Yr/Yr	Pacific	Yr/Yr	INTL	Yr/Yr	SYSTEM	Yr/Yr
2005												
January	50,860,538	0.1%	8,076,156	9.2%	5,901,875	15.4%	5,959,002	14.8%	19,937,032	12.6%	70,797,570	3.3%
February	47,691,972	(2.6%)	7,265,985	5.4%	5,402,646	11.4%	5,373,969	11.4%	18,042,600	8.9%	65,734,571	0.3%
March	54,167,735	0.6%	8,331,510	10.4%	6,007,880	15.4%	5,966,422	15.3%	20,305,812	13.3%	74,473,547	3.8%
April	51,954,881	(0.3%)	8,679,630	8.2%	5,638,878	12.2%	5,864,081	16.7%	20,182,589	11.7%	72,137,471	2.8%
May	53,424,220	1.1%	9,751,597	6.2%	5,273,647	9.2%	6,198,039	14.7%	21,223,283	9.3%	74,647,503	3.3%
June	53,888,149	0.5%	9,925,848	6.8%	5,370,017	9.5%	6,152,435	13.2%	21,448,300	9.2%	75,336,450	2.8%
July	55,953,490	0.6%	10,384,656	7.5%	5,838,442	8.0%	6,467,971	12.0%	22,691,069	8.9%	78,644,559	2.8%
August	55,304,896	(1.1%)	9,992,595	4.0%	5,604,648	4.2%	6,440,750	11.7%	22,037,993	6.2%	77,342,889	0.9%
September	49,455,827	(0.6%)	9,992,702	8.7%	4,589,340	11.1%	6,111,407	10.4%	20,693,449	9.7%	70,149,277	2.2%
October	50,792,192	(4.0%)	9,686,616	5.6%	4,608,886	3.4%	6,106,927	7.9%	20,402,428	5.7%	71,194,620	(1.4%)
November	49,436,767	(2.7%)	8,047,167	2.0%	5,047,238	2.9%	5,826,214	3.9%	18,920,618	2.8%	68,357,385	(1.2%)
December	51,202,641	(3.7%)	8,342,861	2.3%	5,957,557	4.9%	6,115,456	4.0%	20,415,873	3.5%	71,618,514	(1.8%)
Total	624,133,308	(1.0%)	108,477,323	6.3%	65,241,051	8.9%	72,582,673	11.2%	246,301,047	8.4%	870,434,355	1.5%
2006												
January	49,796,643	(2.1%)	8,244,436	2.1%	6,073,374	2.9%	6,048,657	1.5%	20,366,467	2.2%	70,163,110	(0.9%)
February	45,232,674	(5.2%)	7,394,275	1.8%	5,439,809	0.7%	5,452,663	1.5%	18,286,746	1.4%	63,519,420	(3.4%)
March	52,363,874	(3.3%)	8,948,949	7.4%	6,185,333	3.0%	6,091,408	2.1%	21,225,689	4.5%	73,589,563	(1.2%)
April	-	-	-	-	-	-	-	-	-	-	-	-
May	-	-	-	-	-	-	-	-	-	-	-	-
June	-	-	-	-	-	-	-	-	-	-	-	-
July	-	-	-	-	-	-	-	-	-	-	-	-
August	-	-	-	-	-	-	-	-	-	-	-	-
September	-	-	-	-	-	-	-	-	-	-	-	-
October	-	-	-	-	-	-	-	-	-	-	-	-
November	-	-	-	-	-	-	-	-	-	-	-	-
December	-	-	-	-	-	-	-	-	-	-	-	-
YTD 2002	146,080,088	(11.0%)	21,074,893	(19.1%)	13,047,900	(3.9%)	14,378,009	(24.6%)	48,500,802	(17.4%)	194,580,890	(12.7%)
YTD 2003	146,419,494	0.2%	21,341,136	1.3%	13,285,120	1.8%	15,906,490	10.6%	50,532,746	4.2%	196,952,239	1.2%
YTD 2004	153,568,199	4.9%	21,829,652	2.3%	15,173,344	14.2%	15,193,746	(4.5%)	52,196,743	3.3%	205,764,942	4.5%
YTD 2005	152,720,245	(0.6%)	23,673,650	8.4%	17,312,401	14.1%	17,299,393	13.9%	58,285,444	11.7%	211,005,689	2.5%
YTD 2006	147,393,191	(3.5%)	24,587,659	3.9%	17,698,516	2.2%	17,592,728	1.7%	59,878,902	2.7%	207,272,093	(1.8%)

ATA MONTHLY PASSENGER TRAFFIC REPORT

Load Factor (%)

Month	DOMESTIC	Yr/Yr	Atlantic	Yr/Yr	Latin	Yr/Yr	Pacific	Yr/Yr	INTL	Yr/Yr	SYSTEM	Yr/Yr
2005												
January	71.0%	5.0	74.7%	1.2	74.4%	2.0	81.7%	(2.6)	76.7%	0.4	72.6%	3.9
February	72.5%	3.2	70.5%	2.8	70.8%	0.9	77.6%	(4.1)	72.7%	0.3	72.5%	2.5
March	80.6%	4.8	84.9%	1.2	76.4%	4.7	84.5%	(2.2)	82.3%	1.2	81.0%	3.9
April	77.5%	0.4	83.2%	0.3	70.7%	1.2	77.7%	(2.3)	78.1%	(0.2)	77.6%	0.2
May	78.2%	3.2	84.3%	3.1	69.3%	4.5	83.0%	(2.6)	80.2%	1.9	78.8%	2.9
June	82.9%	1.5	89.1%	(0.2)	73.4%	3.5	88.9%	(1.4)	85.1%	0.4	83.5%	1.3
July	85.0%	1.9	87.9%	0.4	81.1%	2.5	84.6%	(0.7)	85.2%	0.6	85.1%	1.5
August	81.6%	1.6	84.4%	(0.6)	77.4%	1.1	85.0%	(0.2)	82.8%	(0.0)	81.9%	1.2
September	74.9%	3.6	83.4%	(0.5)	66.0%	1.3	79.9%	(2.1)	78.5%	(0.7)	76.0%	2.5
October	76.5%	1.6	78.6%	(2.8)	69.2%	2.8	81.4%	(0.7)	77.3%	(0.8)	76.7%	1.0
November	77.2%	3.3	79.8%	(0.1)	69.2%	1.8	79.8%	2.2	77.0%	1.1	77.1%	2.7
December	76.5%	3.0	79.3%	(1.1)	73.9%	2.9	81.3%	1.6	78.3%	0.8	77.0%	2.4
Total	78.0%	2.8	82.1%	0.3	72.9%	2.5	82.2%	(1.2)	79.7%	0.4	78.5%	2.2
2006												
January	73.7%	2.6	73.5%	(1.2)	75.0%	0.6	82.5%	0.8	76.6%	(0.1)	74.5%	1.9
February	76.8%	4.3	69.2%	(1.4)	72.6%	1.8	78.5%	0.9	73.0%	0.3	75.7%	3.2
March	81.9%	1.3	81.1%	(3.9)	77.3%	0.9	86.6%	2.1	81.6%	(0.7)	81.8%	0.8
April	-	-	-	-	-	-	-	-	-	-	-	-
May	-	-	-	-	-	-	-	-	-	-	-	-
June	-	-	-	-	-	-	-	-	-	-	-	-
July	-	-	-	-	-	-	-	-	-	-	-	-
August	-	-	-	-	-	-	-	-	-	-	-	-
September	-	-	-	-	-	-	-	-	-	-	-	-
October	-	-	-	-	-	-	-	-	-	-	-	-
November	-	-	-	-	-	-	-	-	-	-	-	-
December	-	-	-	-	-	-	-	-	-	-	-	-
YTD 2002	68.8%	1.3	74.3%	4.4	70.5%	(0.4)	84.2%	9.4	76.2%	4.5	70.6%	2.1
YTD 2003	69.2%	0.4	69.5%	(4.8)	70.2%	(0.3)	75.3%	(8.9)	71.5%	(4.7)	69.8%	(0.9)
YTD 2004	70.5%	1.3	75.2%	5.7	71.3%	1.1	84.3%	9.0	76.7%	5.2	72.1%	2.3
YTD 2005	74.9%	4.4	77.0%	1.8	74.0%	2.6	81.4%	(2.9)	77.4%	0.7	75.6%	3.5
YTD 2006	77.6%	2.7	74.9%	(2.1)	75.1%	1.1	82.7%	1.3	77.3%	(0.2)	77.5%	1.9

ATA MONTHLY PASSENGER TRAFFIC REPORT

March

Carrier	Departures			Enplanements (000)			RPMs (000)			ASMs (000)			Load Factor		
	2006	2005	Change	2006	2005	Change	2006	2005	Change	2006	2005	Change	2006	2005	Change
Alaska	13,991	14,185	(1.4%)	1,313	1,321	(0.6%)	1,312,604	1,296,151	1.3%	1,702,147	1,664,022	2.3%	77.1%	77.9%	(0.8)
Aloha	4,343	4,828	(10.0%)	289	360	(19.7%)	149,104	206,282	(27.7%)	195,733	272,610	(28.2%)	76.2%	75.7%	0.5
American	57,147	59,690	(4.3%)	7,117	6,889	3.3%	8,047,123	8,108,407	(0.8%)	9,658,814	9,960,425	(3.0%)	83.3%	81.4%	1.9
ATA	1,734	4,141	(58.1%)	216	540	(59.9%)	301,319	644,233	(53.2%)	385,128	862,469	(55.3%)	78.2%	74.7%	3.5
Continental	27,969	26,998	3.6%	3,246	3,053	6.3%	3,880,915	3,666,301	5.9%	4,646,874	4,451,382	4.4%	83.5%	82.4%	1.2
CO Micronesia	-	-	-	-	-	-	-	-	-	-	-	-	-	-	-
Delta	45,659	59,756	(23.6%)	6,015	7,473	(19.5%)	6,059,458	7,010,525	(13.6%)	7,418,670	8,654,647	(14.3%)	81.7%	81.0%	0.7
Hawaiian	4,138	3,965	4.4%	499	483	3.3%	515,120	472,667	9.0%	570,332	530,849	7.4%	90.3%	89.0%	1.3
JetBlue	12,387	9,110	36.0%	1,593	1,263	26.1%	2,019,808	1,635,943	23.5%	2,332,038	1,817,615	28.3%	86.6%	90.0%	(3.4)
Midwest	4,584	3,675	24.7%	352	277	27.1%	351,621	282,474	24.5%	432,776	361,232	19.8%	81.2%	78.2%	3.1
Northwest	38,754	46,041	(15.8%)	4,131	4,527	(8.7%)	3,769,478	4,164,256	(9.5%)	4,460,245	5,119,149	(12.9%)	84.5%	81.3%	3.2
Southwest	91,567	87,096	5.1%	8,337	7,668	8.7%	5,832,077	5,236,018	11.4%	7,722,943	7,105,762	8.7%	75.5%	73.7%	1.8
United	43,031	41,688	3.2%	5,137	4,850	5.9%	6,179,046	5,845,855	5.7%	7,378,055	7,063,754	4.4%	83.7%	82.8%	1.0
US Airways	44,907	56,988	(21.2%)	4,791	5,657	(15.3%)	4,475,066	5,073,111	(11.8%)	5,460,120	6,303,819	(13.4%)	82.0%	80.5%	1.5
TOTAL	390,211	418,161	(6.7%)	43,036	44,361	(3.0%)	42,892,739	43,642,223	(1.7%)	52,363,874	54,167,735	(3.3%)	81.9%	80.6%	1.3

Carrier	Departures			Enplanements (000)			RPMs (000)			ASMs (000)			Load Factor		
	2006	2005	Change	2006	2005	Change	2006	2005	Change	2006	2005	Change	2006	2005	Change
Alaska	1,178	1,068	10.3%	143	123	15.9%	212,173	167,600	26.6%	247,007	215,024	14.9%	85.9%	77.9%	8.0
Aloha	-	-	-	-	-	-	-	-	-	-	-	-	-	-	-
American	11,863	11,977	(1.0%)	1,690	1,657	2.0%	4,051,800	3,958,383	2.4%	5,249,375	5,069,991	3.5%	77.2%	78.1%	(0.9)
ATA	132	172	(23.3%)	15	23	(34.3%)	23,537	37,154	(36.7%)	35,290	52,526	(32.8%)	66.7%	70.7%	(4.0)
Continental	6,608	6,723	(1.7%)	899	887	1.4%	2,651,637	2,336,114	13.5%	3,318,903	2,895,087	14.6%	79.9%	80.7%	(0.8)
CO Micronesia	1,146	1,165	(1.6%)	133	134	(0.6%)	265,822	263,010	1.1%	349,863	351,316	(0.4%)	76.0%	74.9%	1.1
Delta	5,367	4,535	18.3%	778	704	10.5%	2,517,000	2,272,483	10.8%	3,194,778	2,788,817	14.6%	78.8%	81.5%	(2.7)
Hawaiian	-	-	-	-	-	-	-	-	-	-	-	-	-	-	-
JetBlue	248	125	98.4%	32	17	90.2%	39,485	21,596	82.8%	47,509	25,085	89.4%	83.1%	86.1%	-
Midwest	-	-	-	-	-	-	-	-	-	-	-	-	-	-	-
Northwest	3,336	3,100	7.6%	711	679	4.6%	2,663,288	2,686,554	(0.9%)	2,923,011	2,977,052	(1.8%)	91.1%	90.2%	0.9
Southwest	-	-	-	-	-	-	-	-	-	-	-	-	-	-	-
United	4,867	4,729	2.9%	913	886	3.1%	3,970,538	3,967,868	0.1%	4,705,654	4,744,129	(0.8%)	84.4%	83.6%	0.7
US Airways	3,700	4,032	(8.2%)	475	520	(8.7%)	915,379	997,000	(8.2%)	1,154,299	1,186,786	(2.7%)	79.3%	84.0%	(4.7)
TOTAL	38,445	37,626	2.2%	5,789	5,630	2.8%	17,310,660	16,707,762	3.6%	21,225,689	20,305,812	4.5%	81.6%	82.3%	(0.7)

Carrier	Departures			Enplanements (000)			RPMs (000)			ASMs (000)			Load Factor		
	2006	2005	Change	2006	2005	Change	2006	2005	Change	2006	2005	Change	2006	2005	Change
Alaska	15,169	15,253	(0.6%)	1,456	1,444	0.8%	1,524,777	1,463,751	4.2%	1,949,154	1,879,046	3.7%	78.2%	77.9%	0.3
Aloha	4,343	4,828	(10.0%)	289	360	(19.7%)	149,104	206,282	(27.7%)	195,733	272,610	(28.2%)	76.2%	75.7%	0.5
American	69,010	71,667	(3.7%)	8,807	8,546	3.0%	12,098,923	12,066,790	0.3%	14,908,189	15,030,415	(0.8%)	81.2%	80.3%	0.9
ATA	1,866	4,313	(56.7%)	232	563	(58.8%)	324,856	681,387	(52.3%)	420,418	914,994	(54.1%)	77.3%	74.5%	2.8
Continental	34,577	33,721	2.5%	4,145	3,940	5.2%	6,532,552	6,002,415	8.8%	7,965,777	7,346,469	8.4%	82.0%	81.7%	0.3
CO Micronesia	1,146	1,165	(1.6%)	133	134	(0.6%)	265,822	263,010	1.1%	349,863	351,316	(0.4%)	76.0%	74.9%	1.1
Delta	51,026	64,291	(20.6%)	6,793	8,177	(16.9%)	8,576,458	9,283,008	(7.6%)	10,613,448	11,443,464	(7.3%)	80.8%	81.1%	(0.3)
Hawaiian	4,138	3,965	4.4%	499	483	3.3%	515,120	472,667	9.0%	570,332	530,849	7.4%	90.3%	89.0%	1.3
JetBlue	12,635	9,235	36.8%	1,625	1,280	26.9%	2,059,293	1,657,539	24.2%	2,379,547	1,842,700	29.1%	86.5%	90.0%	(3.4)
Midwest	4,584	3,675	24.7%	352	277	27.1%	351,621	282,474	24.5%	432,776	361,232	19.8%	81.2%	78.2%	3.1
Northwest	42,090	49,141	(14.3%)	4,841	5,206	(7.0%)	6,432,766	6,850,810	(6.1%)	7,383,256	8,096,201	(8.8%)	87.1%	84.6%	2.5
Southwest	91,567	87,096	5.1%	8,337	7,668	8.7%	5,832,077	5,236,018	11.4%	7,722,943	7,105,762	8.7%	75.5%	73.7%	1.8
United	47,898	46,417	3.2%	6,050	5,736	5.5%	10,149,584	9,813,723	3.4%	12,083,709	11,807,883	2.3%	84.0%	83.1%	0.9
US Airways	48,607	61,020	(20.3%)	5,266	6,178	(14.8%)	5,390,445	6,070,111	(11.2%)	6,614,419	7,490,605	(11.7%)	81.5%	81.0%	0.5
TOTAL	428,656	455,787	(6.0%)	48,825	49,992	(2.3%)	60,203,398	60,349,985	(0.2%)	73,589,563	74,473,547	(1.2%)	81.8%	81.0%	0.8

DOMESTIC INTERNATIONAL SYSTEM

ATA MONTHLY PASSENGER TRAFFIC REPORT

March

Carrier	Departures			Enplanements (000)			RPMs (000)			ASMs (000)			Load Factor		
	2006	2005	Change	2006	2005	Change	2006	2005	Change	2006	2005	Change	2006	2005	Change
Alaska	-	-	-	-	-	-	-	-	-	-	-	-	-	-	-
Aloha	-	-	-	-	-	-	-	-	-	-	-	-	-	-	-
American	2,055	1,995	3.0%	371	368	0.7%	1,553,185	1,538,588	0.9%	1,958,519	1,813,829	8.0%	79.3%	84.8%	(5.5)
ATA	-	-	-	-	-	-	-	-	-	-	-	-	-	-	-
Continental	1,978	1,628	21.5%	337	294	14.6%	1,396,606	1,194,131	17.0%	1,769,559	1,438,252	23.0%	78.9%	83.0%	(4.1)
CO Micronesia	-	-	-	-	-	-	-	-	-	-	-	-	-	-	-
Delta	2,404	2,205	9.0%	384	372	3.2%	1,679,508	1,606,242	4.6%	2,115,250	1,928,113	9.7%	79.4%	83.3%	(3.9)
Hawaiian	-	-	-	-	-	-	-	-	-	-	-	-	-	-	-
JetBlue	-	-	-	-	-	-	-	-	-	-	-	-	-	-	-
Midwest	-	-	-	-	-	-	-	-	-	-	-	-	-	-	-
Northwest	902	858	5.1%	225	217	4.0%	921,373	893,871	3.1%	1,049,048	993,415	5.6%	87.8%	90.0%	(2.2)
Southwest	-	-	-	-	-	-	-	-	-	-	-	-	-	-	-
United	1,362	1,483	(8.2%)	279	304	(8.4%)	1,231,362	1,338,270	(8.0%)	1,472,229	1,585,396	(7.1%)	83.6%	84.4%	(0.8)
US Airways	619	610	1.5%	121	128	(5.5%)	471,977	504,067	(6.4%)	584,344	572,505	2.1%	80.8%	88.0%	(7.3)
TOTAL	9,320	8,779	6.2%	1,717	1,683	2.0%	7,254,011	7,075,169	2.5%	8,948,949	8,331,510	7.4%	81.1%	84.9%	(3.9)

Carrier	Departures			Enplanements (000)			RPMs (000)			ASMs (000)			Load Factor		
	2006	2005	Change	2006	2005	Change	2006	2005	Change	2006	2005	Change	2006	2005	Change
Alaska	1,178	1,068	10.3%	143	123	15.9%	212,173	167,600	26.6%	247,007	215,024	14.9%	85.9%	77.9%	8.0
Aloha	-	-	-	-	-	-	-	-	-	-	-	-	-	-	-
American	9,383	9,619	(2.5%)	1,237	1,223	1.2%	1,992,916	2,017,822	(1.2%)	2,650,402	2,742,664	(3.4%)	75.2%	73.6%	1.6
ATA	132	172	(23.3%)	15	23	(34.3%)	23,537	37,154	(36.7%)	35,290	52,526	(32.8%)	66.7%	70.7%	(4.0)
Continental	4,391	4,915	(10.7%)	506	556	(9.0%)	854,570	873,054	(2.1%)	1,073,882	1,101,040	(2.5%)	79.6%	79.3%	0.3
CO Micronesia	-	-	-	-	-	-	-	-	-	-	-	-	-	-	-
Delta	2,901	2,268	27.9%	379	318	19.2%	737,105	572,785	28.7%	965,846	747,442	29.2%	76.3%	76.6%	(0.3)
Hawaiian	-	-	-	-	-	-	-	-	-	-	-	-	-	-	-
JetBlue	248	125	98.4%	32	17	90.2%	39,485	21,596	82.8%	47,509	25,085	89.4%	83.1%	86.1%	-
Midwest	-	-	-	-	-	-	-	-	-	-	-	-	-	-	-
Northwest	-	-	-	-	-	-	-	-	-	-	-	-	-	-	-
Southwest	-	-	-	-	-	-	-	-	-	-	-	-	-	-	-
United	1,621	1,374	18.0%	196	159	23.6%	480,869	408,649	17.7%	595,442	509,818	16.8%	80.8%	80.2%	0.6
US Airways	3,081	3,422	(10.0%)	354	392	(9.7%)	443,402	492,933	(10.0%)	569,955	614,281	(7.2%)	77.8%	80.2%	(2.4)
TOTAL	22,935	22,963	(0.1%)	2,862	2,811	1.8%	4,784,057	4,591,593	4.2%	6,185,333	6,007,880	3.0%	77.3%	76.4%	0.9

Carrier	Departures			Enplanements (000)			RPMs (000)			ASMs (000)			Load Factor		
	2006	2005	Change	2006	2005	Change	2006	2005	Change	2006	2005	Change	2006	2005	Change
Alaska	-	-	-	-	-	-	-	-	-	-	-	-	-	-	-
Aloha	-	-	-	-	-	-	-	-	-	-	-	-	-	-	-
American	425	363	17.1%	82	66	24.4%	505,700	401,973	25.8%	640,455	513,497	24.7%	79.0%	78.3%	0.7
ATA	-	-	-	-	-	-	-	-	-	-	-	-	-	-	-
Continental	239	180	32.8%	56	37	50.8%	400,461	268,929	48.9%	475,462	355,795	33.6%	84.2%	75.6%	8.6
CO Micronesia	1,146	1,165	(1.6%)	133	134	(0.6%)	265,822	263,010	1.1%	349,863	351,316	(0.4%)	76.0%	74.9%	1.1
Delta	62	62	-	15	14	7.1%	100,387	93,456	7.4%	113,682	113,262	0.4%	88.3%	82.5%	5.8
Hawaiian	-	-	-	-	-	-	-	-	-	-	-	-	-	-	-
JetBlue	-	-	-	-	-	-	-	-	-	-	-	-	-	-	-
Midwest	-	-	-	-	-	-	-	-	-	-	-	-	-	-	-
Northwest	2,434	2,242	8.6%	485	463	4.9%	1,741,915	1,792,683	(2.8%)	1,873,963	1,983,637	(5.5%)	93.0%	90.4%	2.6
Southwest	-	-	-	-	-	-	-	-	-	-	-	-	-	-	-
United	1,884	1,872	0.6%	438	423	3.6%	2,258,307	2,220,949	1.7%	2,637,983	2,648,915	(0.4%)	85.6%	83.8%	1.8
US Airways	-	-	-	-	-	-	-	-	-	-	-	-	-	-	-
TOTAL	6,190	5,884	5.2%	1,209	1,136	6.4%	5,272,592	5,041,000	4.6%	6,091,408	5,966,422	2.1%	86.6%	84.5%	2.1

ATA MONTHLY PASSENGER TRAFFIC REPORT

YTD March

Carrier	Departures			Enplanements (000)			RPMs (000)			ASMs (000)			Load Factor		
	2006	2005	Change	2006	2005	Change	2006	2005	Change	2006	2005	Change	2006	2005	Change
Alaska	39,935	40,578	(1.6%)	3,495	3,503	(0.2%)	3,472,707	3,417,981	1.6%	4,837,816	4,737,223	2.1%	71.8%	72.2%	(0.4)
Aloha	12,842	13,982	(8.2%)	838	997	(15.9%)	436,805	577,242	(24.3%)	576,573	805,183	(28.4%)	75.8%	71.7%	4.1
American	163,337	169,974	(3.9%)	19,202	18,251	5.2%	21,874,675	21,541,371	1.5%	27,653,992	28,259,466	(2.1%)	79.1%	76.2%	2.9
ATA	5,189	13,374	(61.2%)	603	1,470	(58.9%)	848,892	1,790,430	(52.6%)	1,162,406	2,826,287	(58.9%)	73.0%	63.3%	9.7
Continental	76,088	72,117	5.5%	8,616	7,821	10.2%	10,338,290	9,419,105	9.8%	12,761,655	11,965,805	6.7%	81.0%	78.7%	2.3
CO Micronesia	-	-	-	-	-	-	-	-	-	-	-	-	-	-	-
Delta	129,925	169,066	(23.2%)	16,084	19,731	(18.5%)	16,037,185	18,459,449	(13.1%)	20,738,158	24,543,617	(15.5%)	77.3%	75.2%	2.1
Hawaiian	12,054	11,470	5.1%	1,415	1,321	7.1%	1,496,895	1,344,454	11.3%	1,667,127	1,539,577	8.3%	89.8%	87.3%	2.5
JetBlue	33,787	25,164	34.3%	4,243	3,330	27.4%	5,440,990	4,359,671	24.8%	6,455,559	5,069,244	27.3%	84.3%	86.0%	(1.7)
Midwest	12,964	10,107	28.3%	885	682	29.8%	886,036	701,294	26.3%	1,225,976	995,301	23.2%	72.3%	70.5%	1.8
Northwest	107,140	127,254	(15.8%)	10,688	11,591	(7.8%)	9,830,101	10,643,836	(7.6%)	12,200,821	13,942,981	(12.5%)	80.6%	76.3%	4.2
Southwest	262,449	249,119	5.4%	22,015	19,781	11.3%	15,280,496	13,238,008	15.4%	22,079,458	20,231,599	9.1%	69.2%	65.4%	3.8
United	121,892	121,340	0.5%	13,765	13,217	4.1%	16,566,233	15,770,040	5.0%	20,805,989	20,201,760	3.0%	79.6%	78.1%	1.6
US Airways	129,039	159,689	(19.2%)	12,682	14,524	(12.7%)	11,806,150	13,057,869	(9.6%)	15,227,662	17,602,201	(13.5%)	77.5%	74.2%	3.3
TOTAL	1,106,641	1,183,234	(6.5%)	114,533	116,219	(1.5%)	114,315,456	114,320,749	(0.0%)	147,393,191	152,720,245	(3.5%)	77.6%	74.9%	2.7

Carrier	Departures			Enplanements (000)			RPMs (000)			ASMs (000)			Load Factor		
	2006	2005	Change	2006	2005	Change	2006	2005	Change	2006	2005	Change	2006	2005	Change
Alaska	3,331	3,108	7.2%	407	345	17.8%	605,736	477,308	26.9%	698,201	629,734	10.9%	86.8%	75.8%	11.0
Aloha	-	-	-	-	-	-	-	-	-	-	-	-	-	-	-
American	33,955	34,269	(0.9%)	4,672	4,483	4.2%	11,115,509	10,687,365	4.0%	15,096,365	14,484,657	4.2%	73.6%	73.8%	(0.2)
ATA	350	546	(35.9%)	39	69	(43.1%)	61,860	113,238	(45.4%)	93,865	171,645	(45.3%)	65.9%	66.0%	(0.1)
Continental	18,379	18,844	(2.5%)	2,361	2,365	(0.2%)	6,928,303	6,218,571	11.4%	9,249,385	8,158,997	13.4%	74.9%	76.2%	(1.3)
CO Micronesia	3,352	3,417	(1.9%)	384	399	(3.8%)	751,403	778,997	(3.5%)	1,023,353	1,027,057	(0.4%)	73.4%	75.8%	(2.4)
Delta	14,399	12,704	13.3%	1,988	1,839	8.1%	6,398,145	5,971,778	7.1%	8,589,445	7,830,023	9.7%	74.5%	76.3%	(1.8)
Hawaiian	-	-	-	-	-	-	-	-	-	-	-	-	-	-	-
JetBlue	630	473	33.2%	77	56	37.5%	95,028	74,858	26.9%	120,956	99,409	21.7%	78.6%	75.3%	-
Midwest	-	-	-	-	-	-	-	-	-	-	-	-	-	-	-
Northwest	9,121	9,017	1.2%	1,912	1,911	0.0%	7,112,341	7,523,718	(5.5%)	8,101,640	8,822,420	(8.2%)	87.8%	85.3%	2.5
Southwest	-	-	-	-	-	-	-	-	-	-	-	-	-	-	-
United	14,070	13,732	2.5%	2,494	2,401	3.8%	10,858,874	10,759,752	0.9%	13,629,358	13,740,528	(0.8%)	79.7%	78.3%	1.4
US Airways	10,491	10,886	(3.6%)	1,212	1,291	(6.1%)	2,331,764	2,513,719	(7.2%)	3,276,335	3,320,974	(1.3%)	71.2%	75.7%	(4.5)
TOTAL	108,078	106,996	1.0%	15,545	15,159	2.5%	46,258,964	45,119,304	2.5%	59,878,902	58,285,444	2.7%	77.3%	77.4%	(0.2)

Carrier	Departures			Enplanements (000)			RPMs (000)			ASMs (000)			Load Factor		
	2006	2005	Change	2006	2005	Change	2006	2005	Change	2006	2005	Change	2006	2005	Change
Alaska	43,266	43,686	(1.0%)	3,902	3,849	1.4%	4,078,443	3,895,289	4.7%	5,536,017	5,366,957	3.2%	73.7%	72.6%	1.1
Aloha	12,842	13,982	(8.2%)	838	997	(15.9%)	436,805	577,242	(24.3%)	576,573	805,183	(28.4%)	75.8%	71.7%	4.1
American	197,292	204,243	(3.4%)	23,875	22,734	5.0%	32,990,184	32,228,735	2.4%	42,750,356	42,744,123	0.0%	77.2%	75.4%	1.8
ATA	5,539	13,920	(60.2%)	643	1,538	(58.2%)	910,752	1,903,668	(52.2%)	1,256,271	2,997,932	(58.1%)	72.5%	63.5%	9.0
Continental	94,467	90,961	3.9%	10,977	10,185	7.8%	17,266,593	15,637,676	10.4%	22,011,040	20,124,802	9.4%	78.4%	77.7%	0.7
CO Micronesia	3,352	3,417	(1.9%)	384	399	(3.8%)	751,403	778,997	(3.5%)	1,023,353	1,027,057	(0.4%)	73.4%	75.8%	(2.4)
Delta	144,324	181,770	(20.6%)	18,072	21,570	(16.2%)	22,435,330	24,431,227	(8.2%)	29,327,603	32,373,640	(9.4%)	76.5%	75.5%	1.0
Hawaiian	12,054	11,470	5.1%	1,415	1,321	7.1%	1,496,895	1,344,454	11.3%	1,667,127	1,539,577	8.3%	89.8%	87.3%	2.5
JetBlue	34,417	25,637	34.2%	4,320	3,386	27.6%	5,536,019	4,434,528	24.8%	6,576,514	5,168,653	27.2%	84.2%	85.8%	(1.6)
Midwest	12,964	10,107	28.3%	885	682	29.8%	886,036	701,294	26.3%	1,225,976	995,301	23.2%	72.3%	70.5%	1.8
Northwest	116,261	136,271	(14.7%)	12,600	13,502	(6.7%)	16,942,442	18,167,554	(6.7%)	20,302,461	22,765,401	(10.8%)	83.5%	79.8%	3.6
Southwest	262,449	249,119	5.4%	22,015	19,781	11.3%	15,280,496	13,238,008	15.4%	22,079,458	20,231,599	9.1%	69.2%	65.4%	3.8
United	135,962	135,072	0.7%	16,258	15,619	4.1%	27,425,107	26,529,792	3.4%	34,435,347	33,942,288	1.5%	79.6%	78.2%	1.5
US Airways	139,530	170,575	(18.2%)	13,894	15,815	(12.1%)	14,137,914	15,571,588	(9.2%)	18,503,997	20,923,175	(11.6%)	76.4%	74.4%	2.0
TOTAL	1,214,719	1,290,230	(5.9%)	130,078	131,378	(1.0%)	160,574,419	159,440,053	0.7%	207,272,093	211,005,689	(1.8%)	77.5%	75.6%	1.9

ATA MONTHLY PASSENGER TRAFFIC REPORT

YTD March

Carrier	Departures			Enplanements (000)			RPMs (000)			ASMs (000)			Load Factor		
	2006	2005	Change	2006	2005	Change	2006	2005	Change	2006	2005	Change	2006	2005	Change
Alaska	-	-	-	-	-	-	-	-	-	-	-	-	-	-	-
Aloha	-	-	-	-	-	-	-	-	-	-	-	-	-	-	-
American	5,763	5,577	3.3%	957	933	2.6%	4,029,530	3,902,163	3.3%	5,512,033	5,066,818	8.8%	73.1%	77.0%	(3.9)
ATA	-	-	-	-	-	-	-	-	-	-	-	-	-	-	-
Continental	5,429	4,441	22.2%	850	734	15.9%	3,550,703	2,987,182	18.9%	4,845,169	3,950,413	22.6%	73.3%	75.6%	(2.3)
CO Micronesia	-	-	-	-	-	-	-	-	-	-	-	-	-	-	-
Delta	6,320	6,134	3.0%	934	939	(0.5%)	4,096,422	4,084,886	0.3%	5,529,974	5,350,961	3.3%	74.1%	76.3%	(2.3)
Hawaiian	-	-	-	-	-	-	-	-	-	-	-	-	-	-	-
JetBlue	-	-	-	-	-	-	-	-	-	-	-	-	-	-	-
Midwest	-	-	-	-	-	-	-	-	-	-	-	-	-	-	-
Northwest	2,323	2,624	(11.5%)	558	600	(7.0%)	2,301,876	2,499,838	(7.9%)	2,727,388	3,041,548	(10.3%)	84.4%	82.2%	2.2
Southwest	-	-	-	-	-	-	-	-	-	-	-	-	-	-	-
United	3,960	4,309	(8.1%)	738	793	(6.9%)	3,257,388	3,481,400	(6.4%)	4,277,062	4,603,013	(7.1%)	76.2%	75.6%	0.5
US Airways	1,796	1,764	1.8%	304	325	(6.5%)	1,191,442	1,276,946	(6.7%)	1,696,033	1,660,897	2.1%	70.2%	76.9%	(6.6)
TOTAL	25,591	24,849	3.0%	4,341	4,323	0.4%	18,427,361	18,232,415	1.1%	24,587,659	23,673,650	3.9%	74.9%	77.0%	(2.1)

Carrier	Departures			Enplanements (000)			RPMs (000)			ASMs (000)			Load Factor		
	2006	2005	Change	2006	2005	Change	2006	2005	Change	2006	2005	Change	2006	2005	Change
Alaska	3,331	3,108	7.2%	407	345	17.8%	605,736	477,308	26.9%	698,201	629,734	10.9%	86.8%	75.8%	11.0
Aloha	-	-	-	-	-	-	-	-	-	-	-	-	-	-	-
American	26,966	27,639	(2.4%)	3,492	3,370	3.6%	5,704,267	5,686,031	0.3%	7,736,514	7,955,145	(2.7%)	73.7%	71.5%	2.3
ATA	350	546	(35.9%)	39	69	(43.1%)	61,860	113,238	(45.4%)	93,865	171,645	(45.3%)	65.9%	66.0%	(0.1)
Continental	12,256	13,881	(11.7%)	1,364	1,523	(10.4%)	2,327,545	2,445,879	(4.8%)	3,022,798	3,166,500	(4.5%)	77.0%	77.2%	(0.2)
CO Micronesia	-	-	-	-	-	-	-	-	-	-	-	-	-	-	-
Delta	7,899	6,390	23.6%	1,012	860	17.7%	2,015,496	1,620,446	24.4%	2,729,343	2,149,189	27.0%	73.8%	75.4%	(1.6)
Hawaiian	-	-	-	-	-	-	-	-	-	-	-	-	-	-	-
JetBlue	630	473	33.2%	77	56	37.5%	95,028	74,858	26.9%	120,956	99,409	21.7%	78.6%	75.3%	-
Midwest	-	-	-	-	-	-	-	-	-	-	-	-	-	-	-
Northwest	-	-	-	-	-	-	-	-	-	-	-	-	-	-	-
Southwest	-	-	-	-	-	-	-	-	-	-	-	-	-	-	-
United	4,661	4,023	15.9%	542	439	23.6%	1,336,490	1,150,638	16.2%	1,716,537	1,480,702	15.9%	77.9%	77.7%	0.2
US Airways	8,695	9,122	(4.7%)	908	966	(6.0%)	1,140,322	1,236,773	(7.8%)	1,580,302	1,660,077	(4.8%)	72.2%	74.5%	(2.3)
TOTAL	64,788	65,182	(0.6%)	7,841	7,627	2.8%	13,286,745	12,805,171	3.8%	17,698,516	17,312,401	2.2%	75.1%	74.0%	1.1

Carrier	Departures			Enplanements (000)			RPMs (000)			ASMs (000)			Load Factor		
	2006	2005	Change	2006	2005	Change	2006	2005	Change	2006	2005	Change	2006	2005	Change
Alaska	-	-	-	-	-	-	-	-	-	-	-	-	-	-	-
Aloha	-	-	-	-	-	-	-	-	-	-	-	-	-	-	-
American	1,226	1,053	16.4%	223	180	23.9%	1,381,712	1,099,171	25.7%	1,847,818	1,462,694	26.3%	74.8%	75.1%	(0.4)
ATA	-	-	-	-	-	-	-	-	-	-	-	-	-	-	-
Continental	694	522	33.0%	147	108	35.3%	1,050,055	785,510	33.7%	1,381,418	1,042,084	32.6%	76.0%	75.4%	0.6
CO Micronesia	3,352	3,417	(1.9%)	384	399	(3.8%)	751,403	778,997	(3.5%)	1,023,353	1,027,057	(0.4%)	73.4%	75.8%	(2.4)
Delta	180	180	-	42	40	5.0%	286,227	266,446	7.4%	330,128	329,873	0.1%	86.7%	80.8%	5.9
Hawaiian	-	-	-	-	-	-	-	-	-	-	-	-	-	-	-
JetBlue	-	-	-	-	-	-	-	-	-	-	-	-	-	-	-
Midwest	-	-	-	-	-	-	-	-	-	-	-	-	-	-	-
Northwest	6,798	6,393	6.3%	1,354	1,311	3.3%	4,810,465	5,023,880	(4.2%)	5,374,252	5,780,872	(7.0%)	89.5%	86.9%	2.6
Southwest	-	-	-	-	-	-	-	-	-	-	-	-	-	-	-
United	5,449	5,400	0.9%	1,214	1,170	3.7%	6,264,996	6,127,714	2.2%	7,635,759	7,656,813	(0.3%)	82.0%	80.0%	2.0
US Airways	-	-	-	-	-	-	-	-	-	-	-	-	-	-	-
TOTAL	17,699	16,965	4.3%	3,364	3,209	4.8%	14,544,858	14,081,718	3.3%	17,592,728	17,299,393	1.7%	82.7%	81.4%	1.3