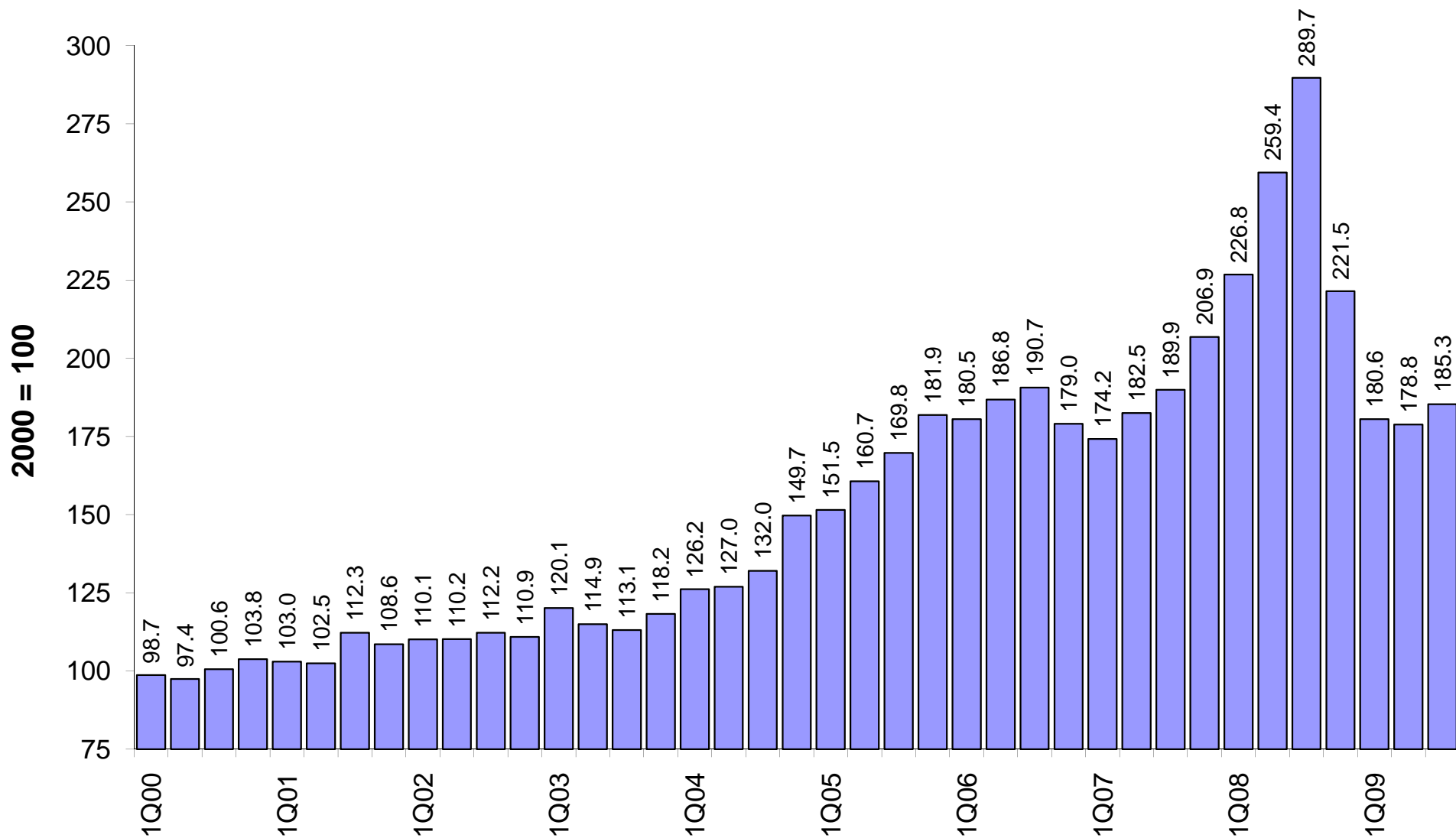
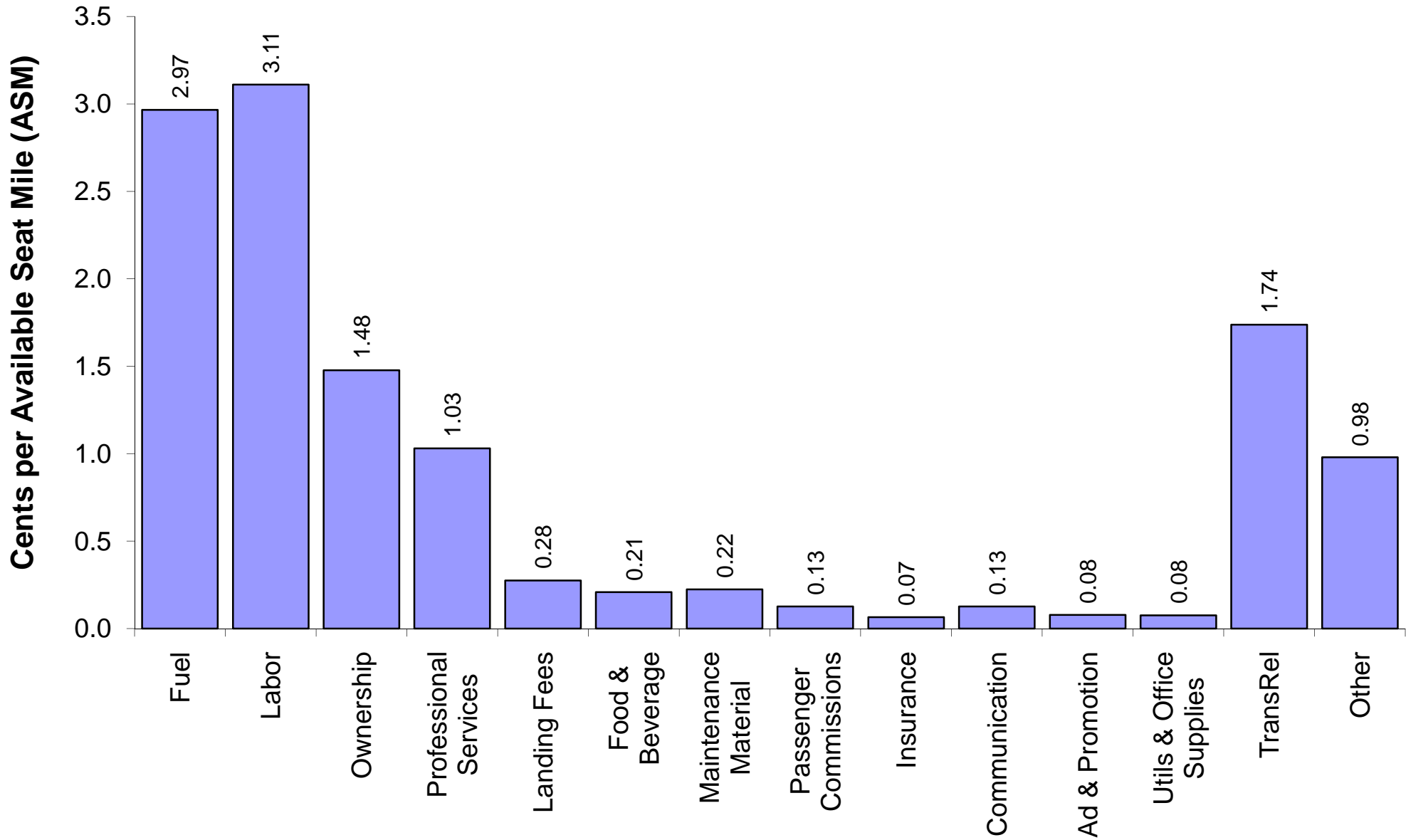


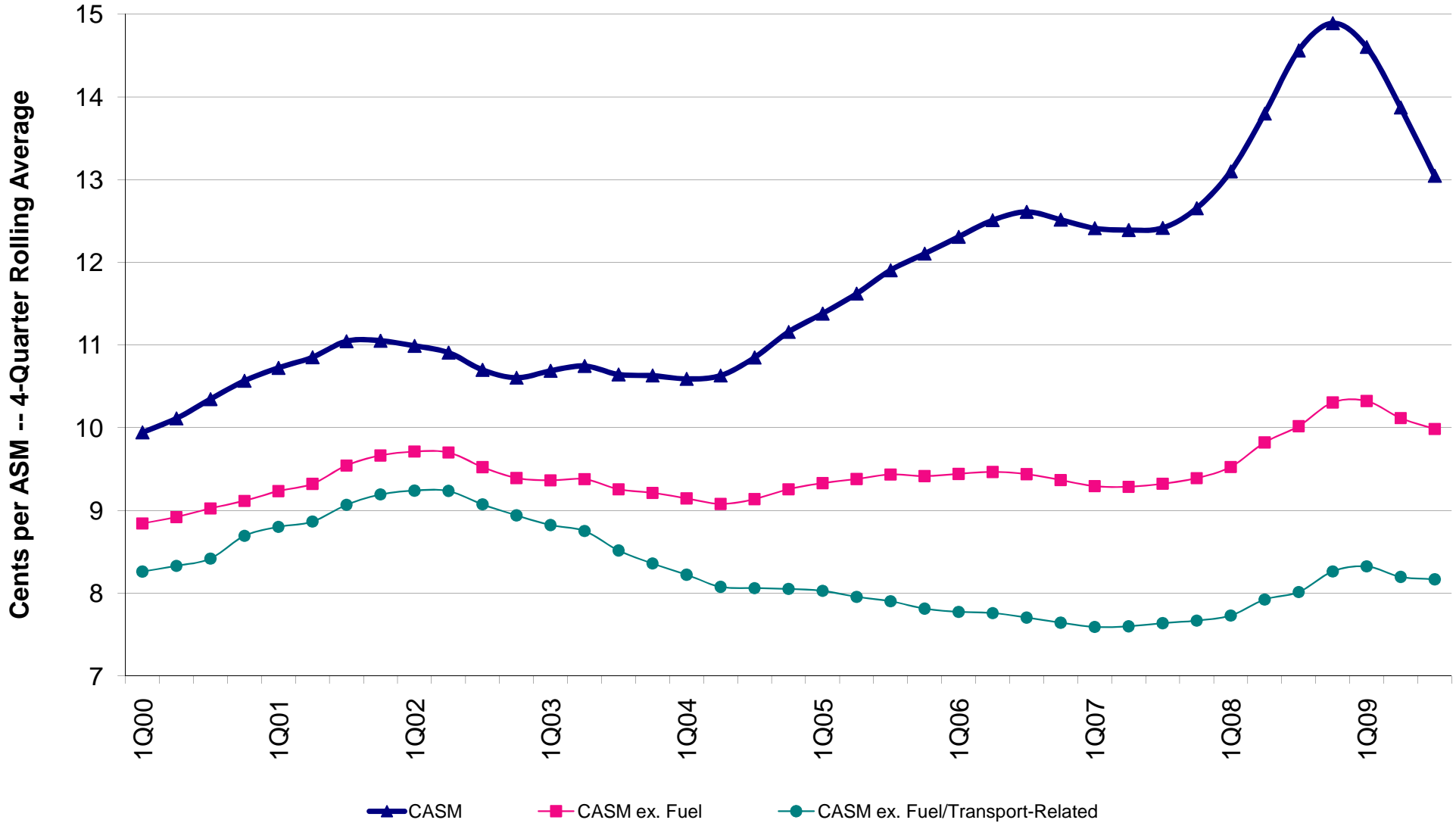
# Composite Index: Cost of Inputs to Airline Production



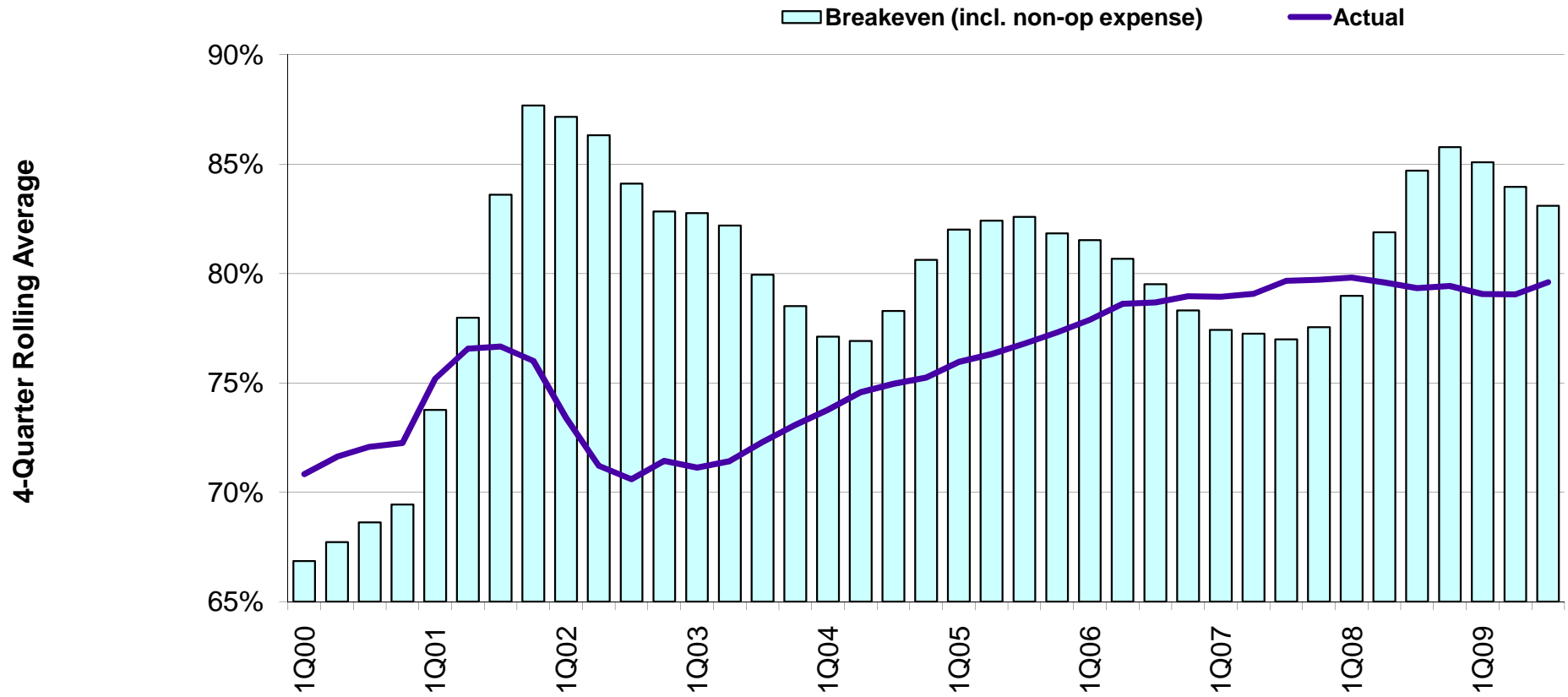
# Unit Operating Cost by Category



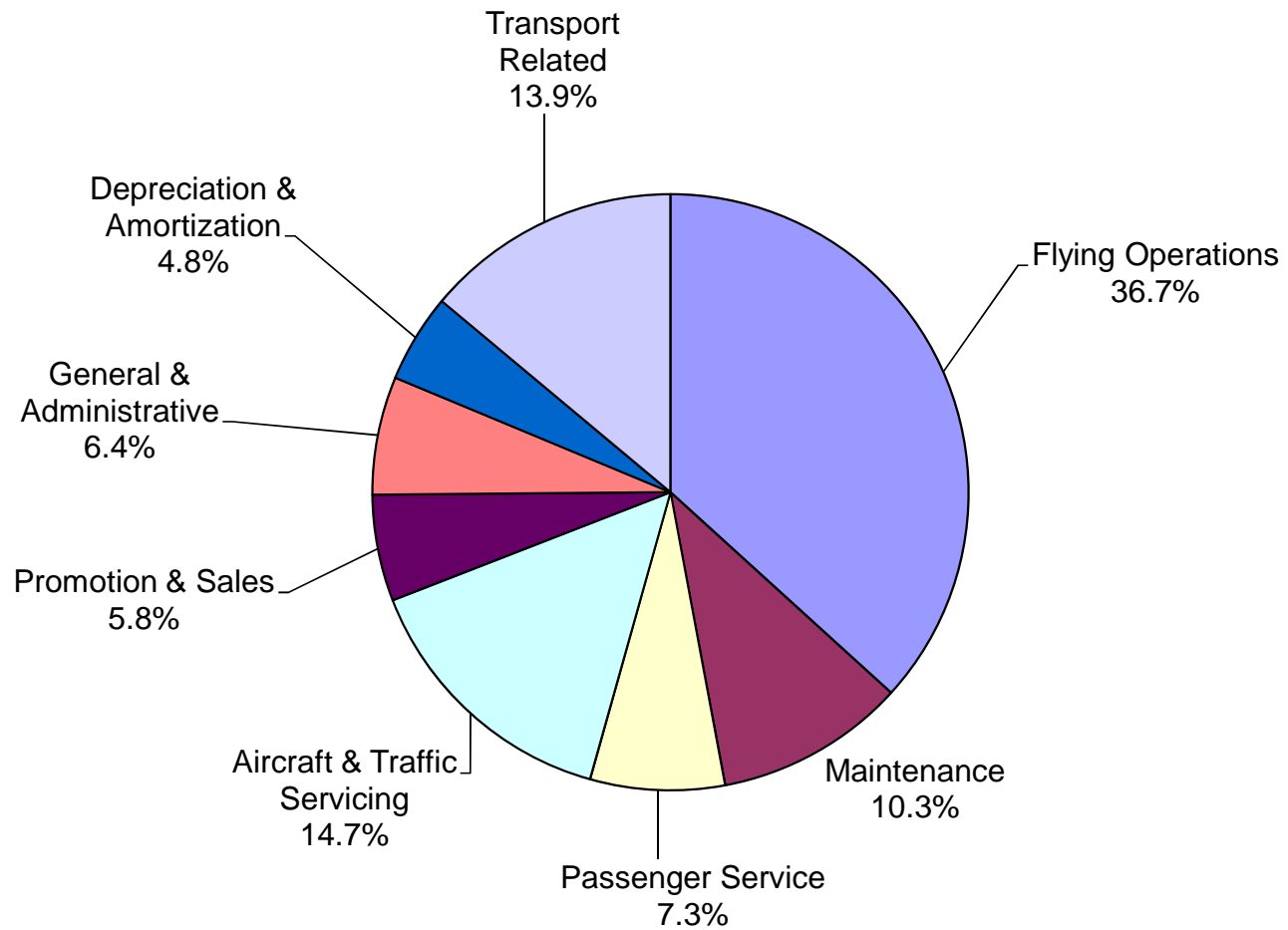
# Unit Operating Cost Trend



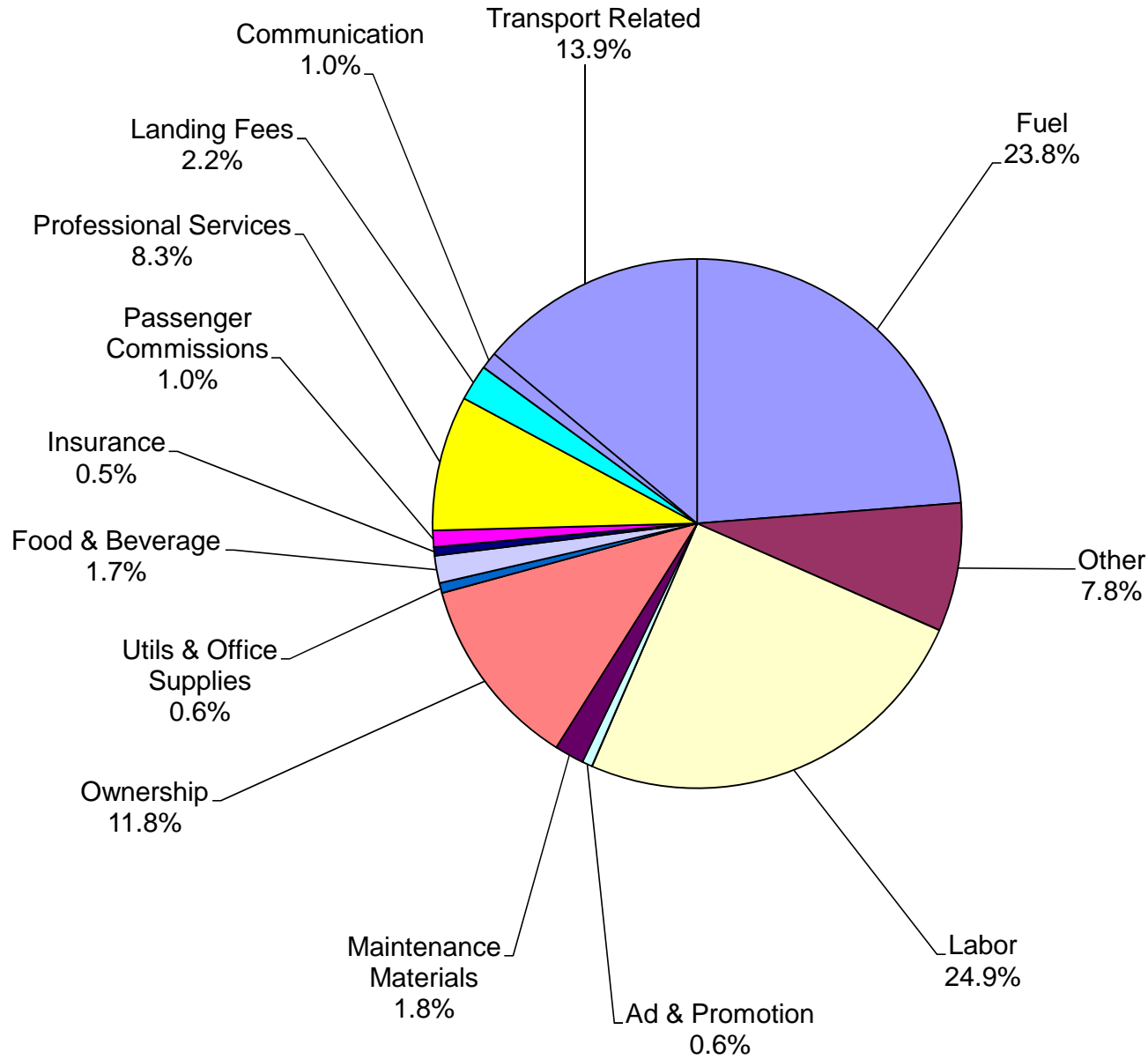
# Load Factor



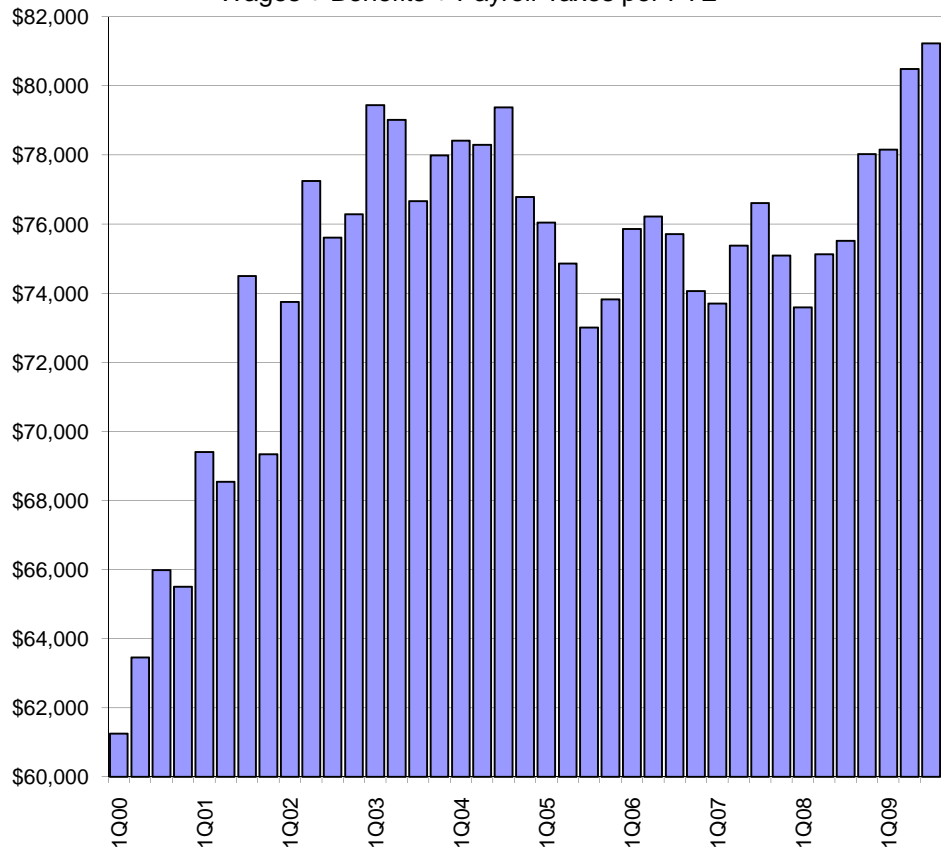
## Operating Costs by Functional Grouping



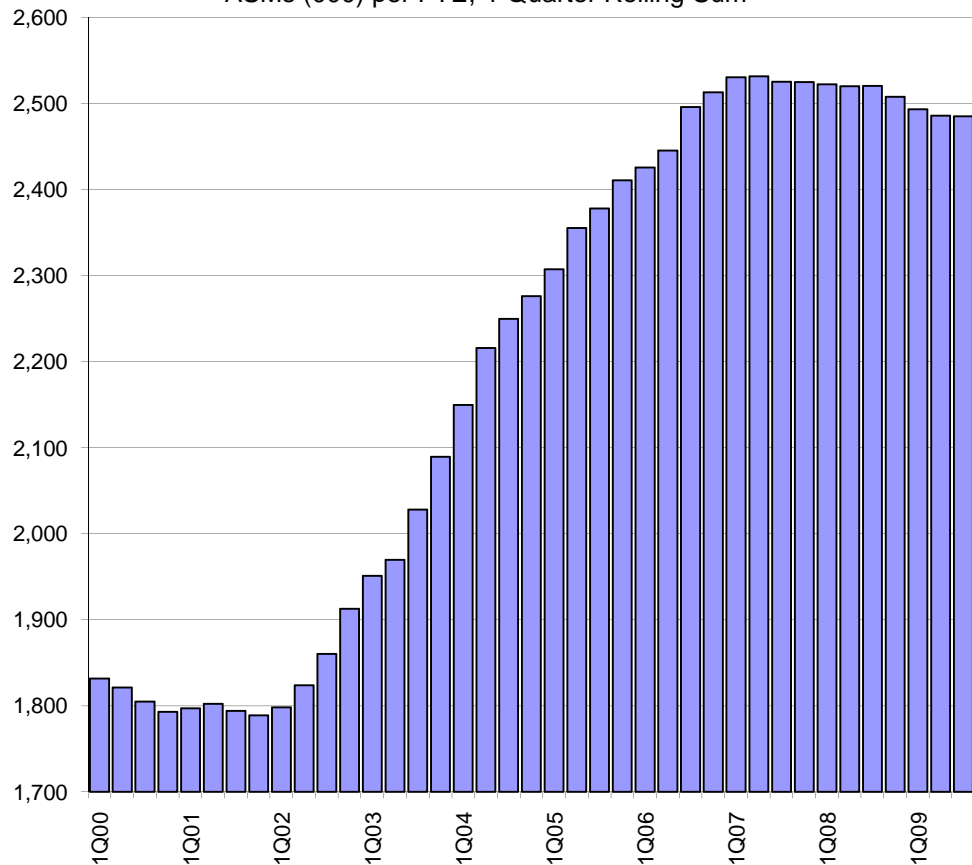
# Operating Costs by Objective Grouping



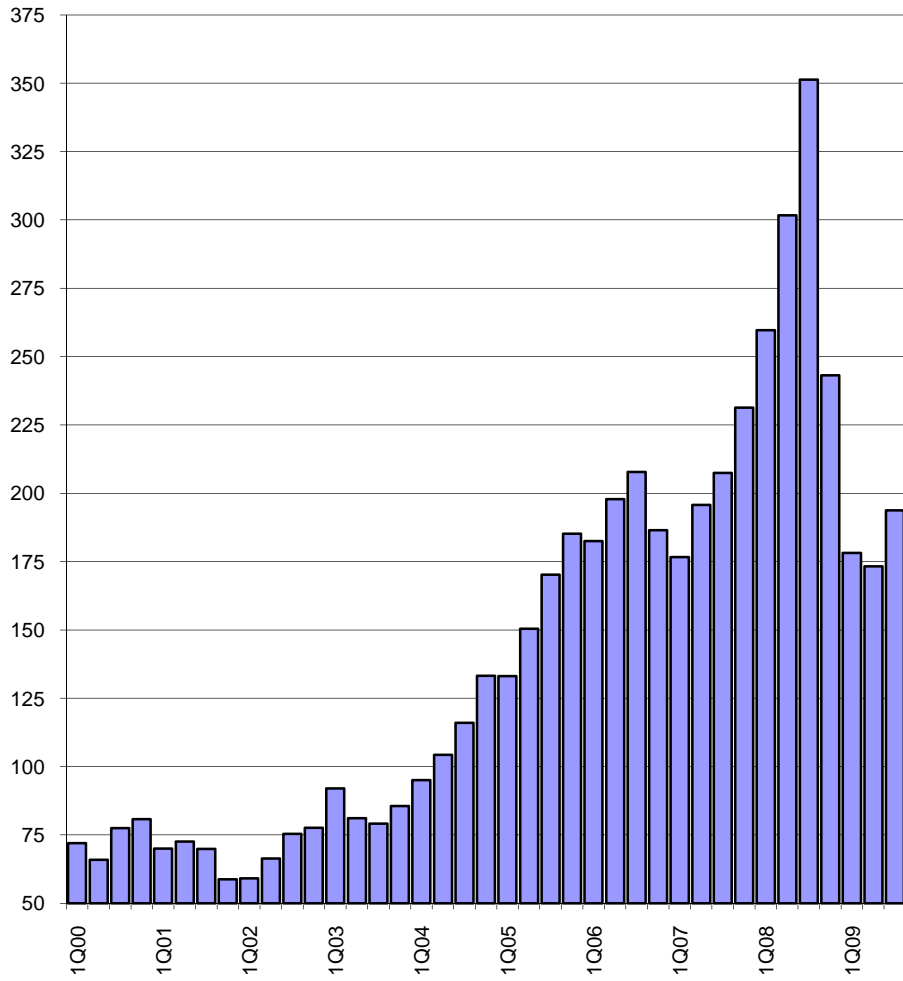
**Labor Costs**  
Wages + Benefits + Payroll Taxes per FTE



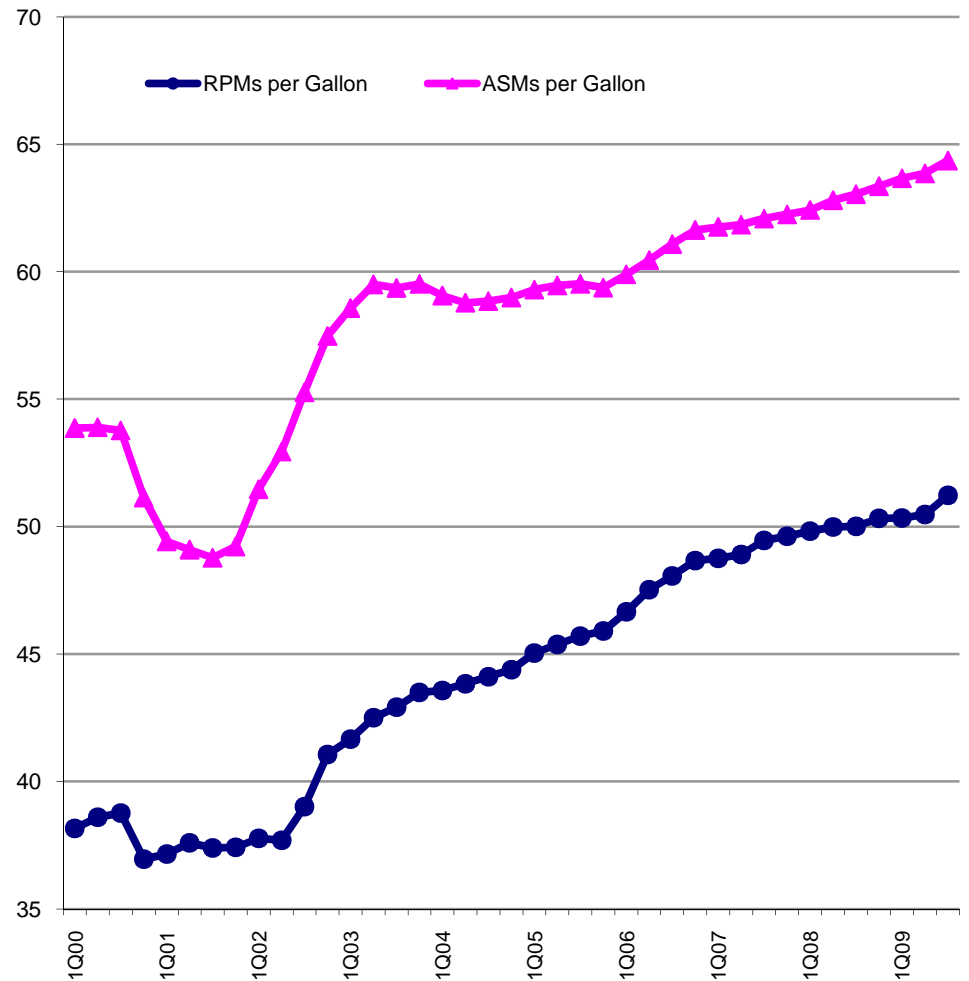
**Employee Productivity**  
ASMs (000) per FTE, 4-Quarter Rolling Sum



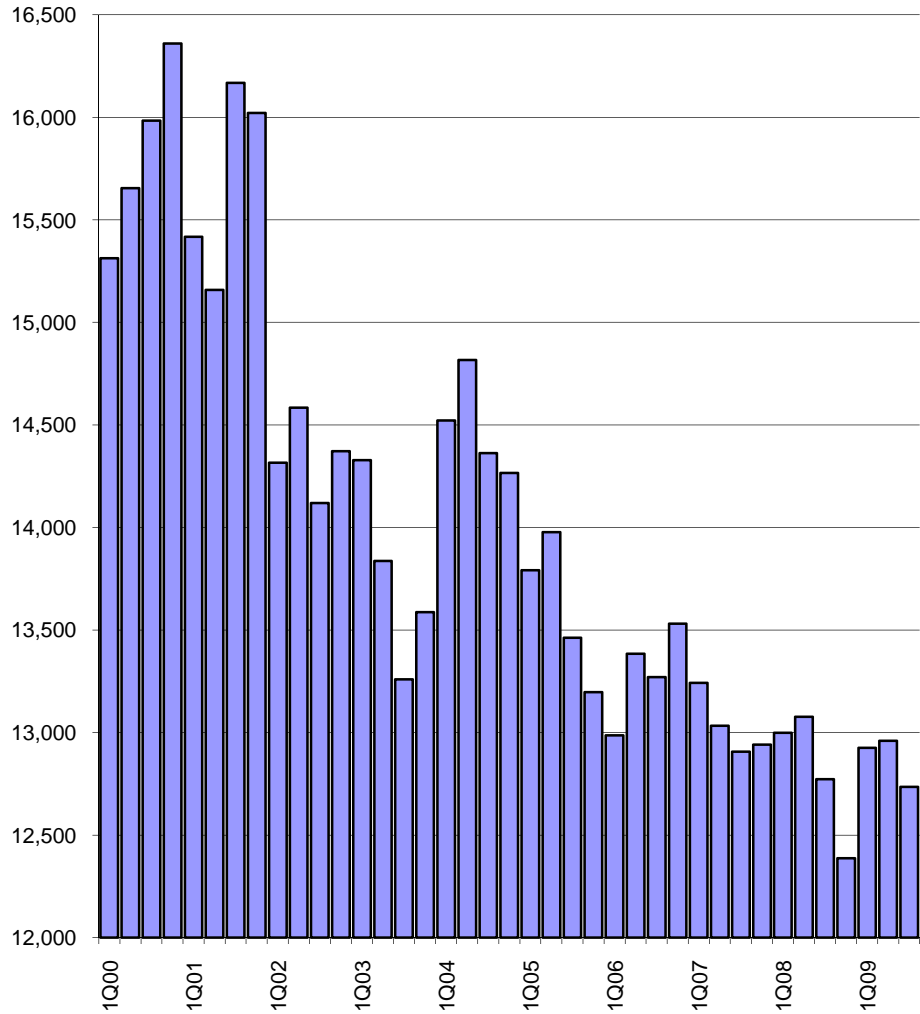
**Fuel Costs (All Services)**  
Cents per Gallon



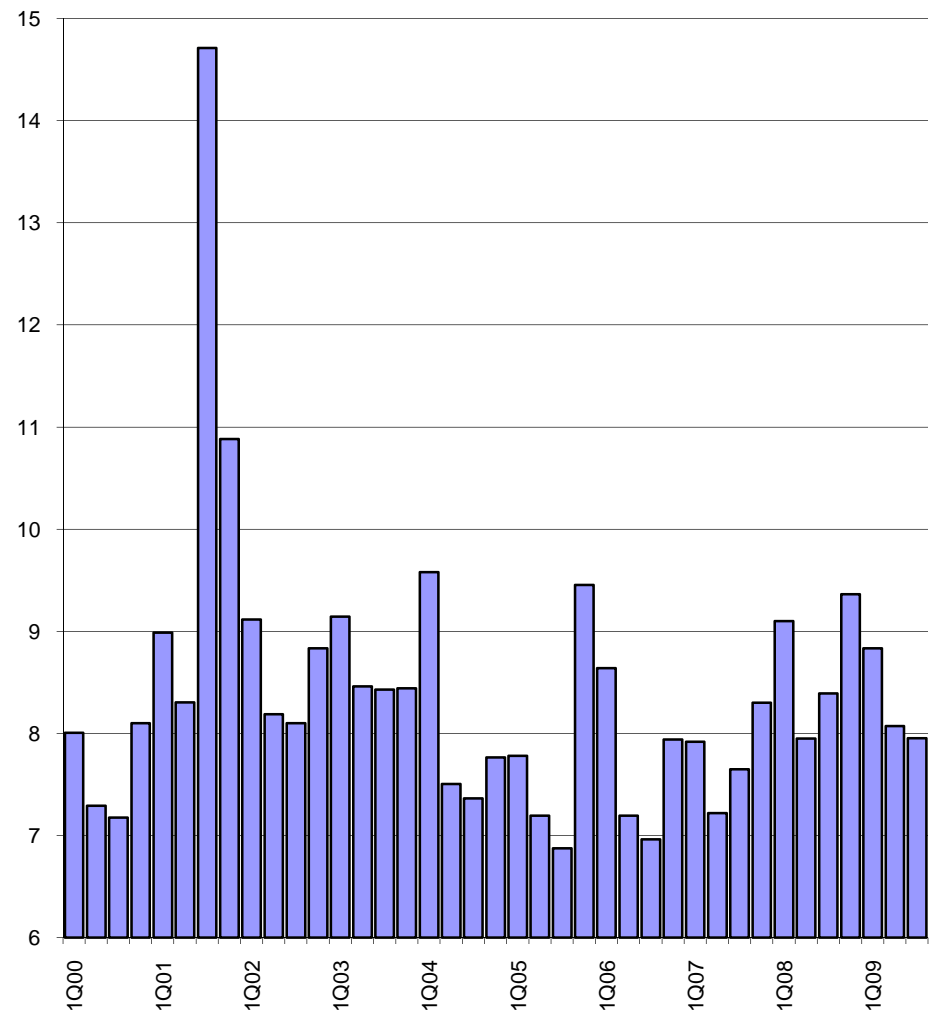
**Fuel Efficiency (All Services)**  
4-Quarter Rolling Average



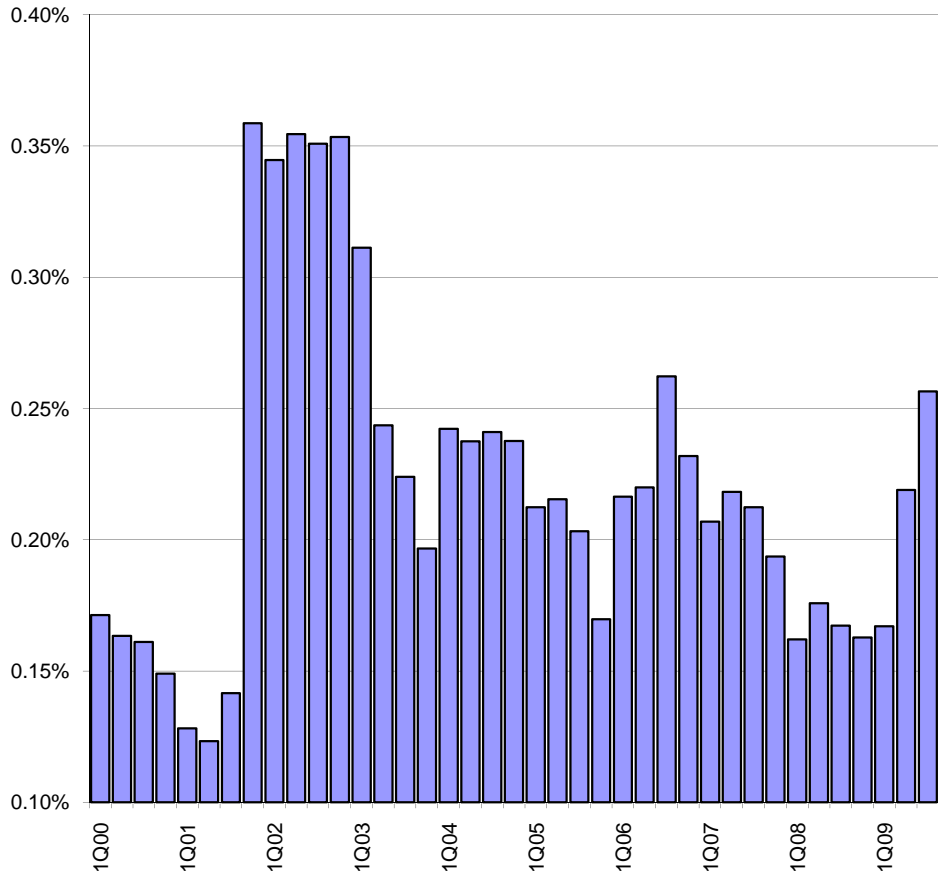
**Aircraft Rents & Ownership Costs**  
Dollars per Operating Seat



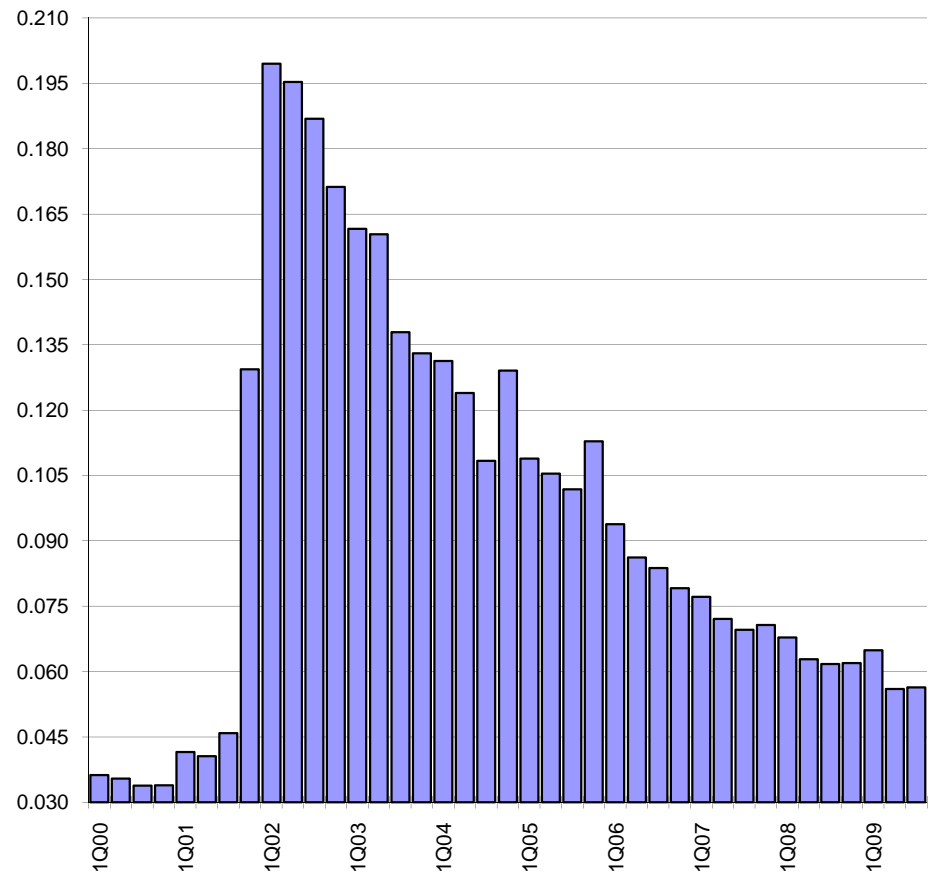
**Non-Aircraft Rents & Ownership Costs**  
Dollars per Enplanement



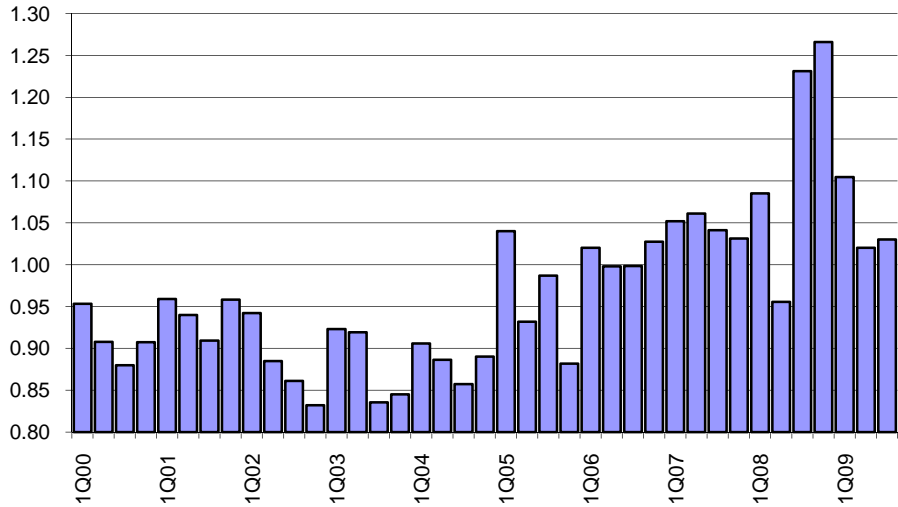
**Aircraft Insurance Costs**  
% of Hull Net Book Value



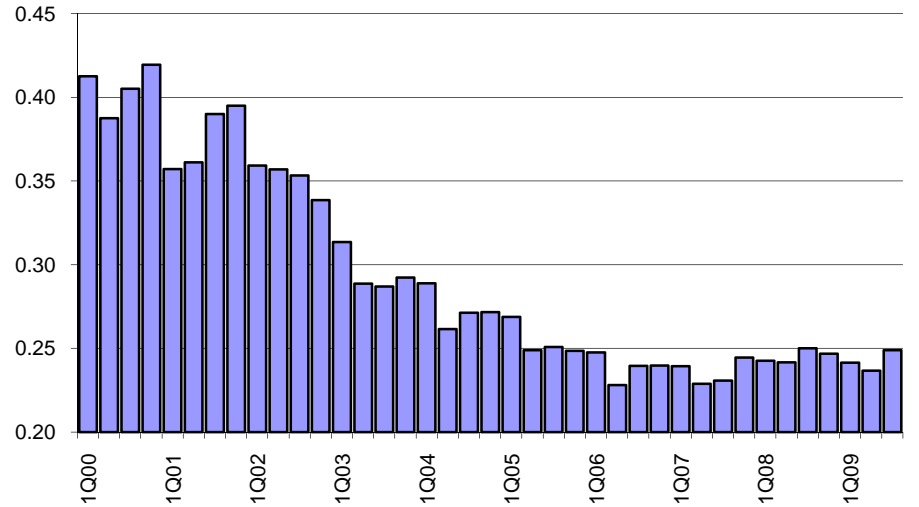
**Non-Aircraft Insurance Costs**  
Cents per Revenue Passenger Mile



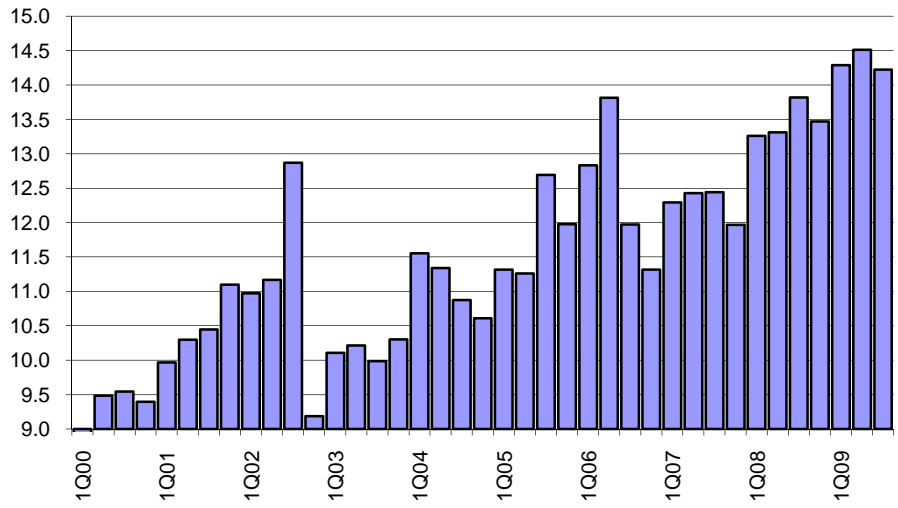
**Professional Services Costs**  
Cents per Available Seat Mile



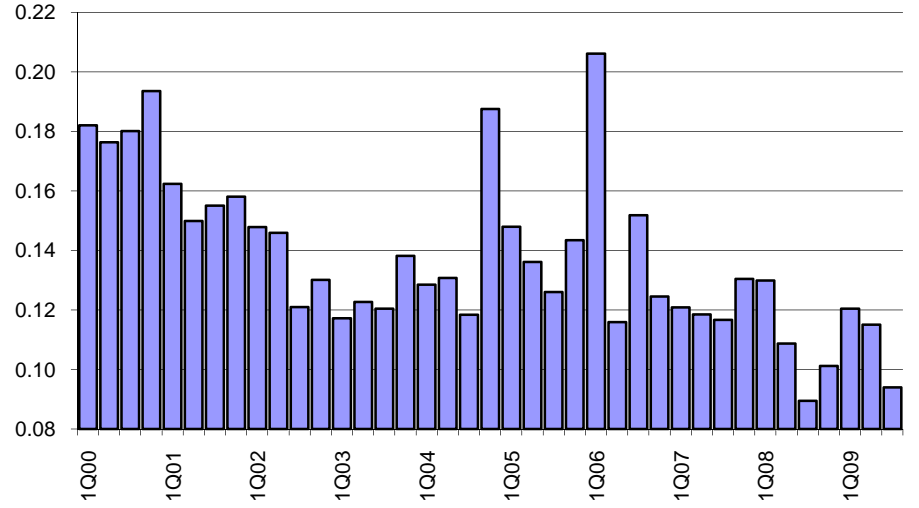
**Food & Beverage Costs**  
Cents per Revenue Passenger Mile



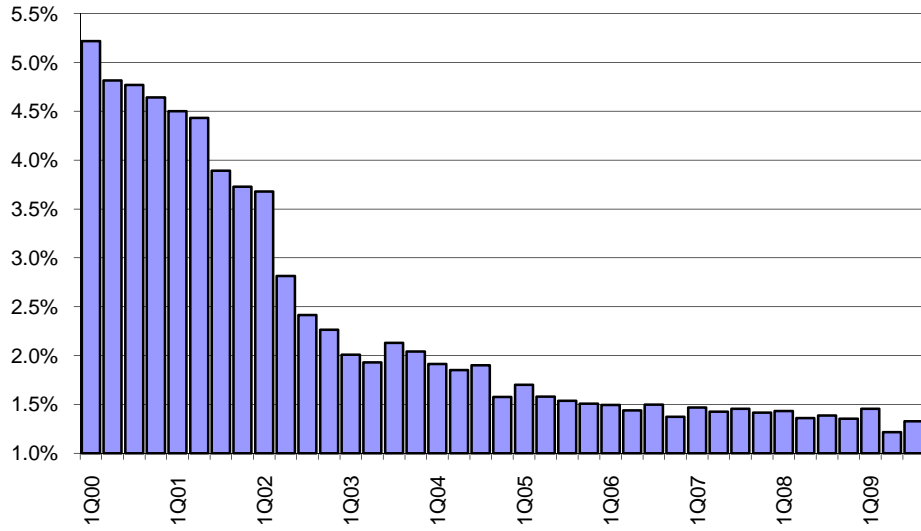
**Landing Fees**  
Dollars per Capacity Ton Landed



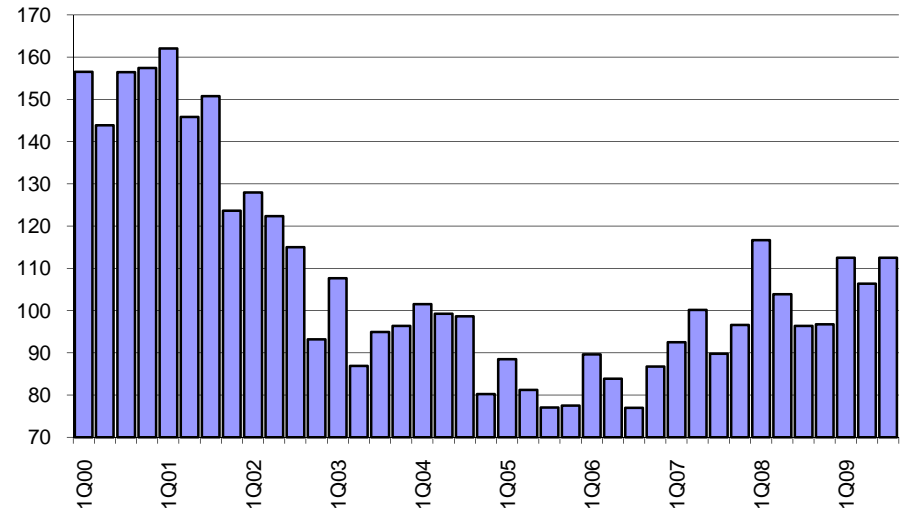
**Advertising & Promotion Costs**  
Cents per Revenue Passenger Mile



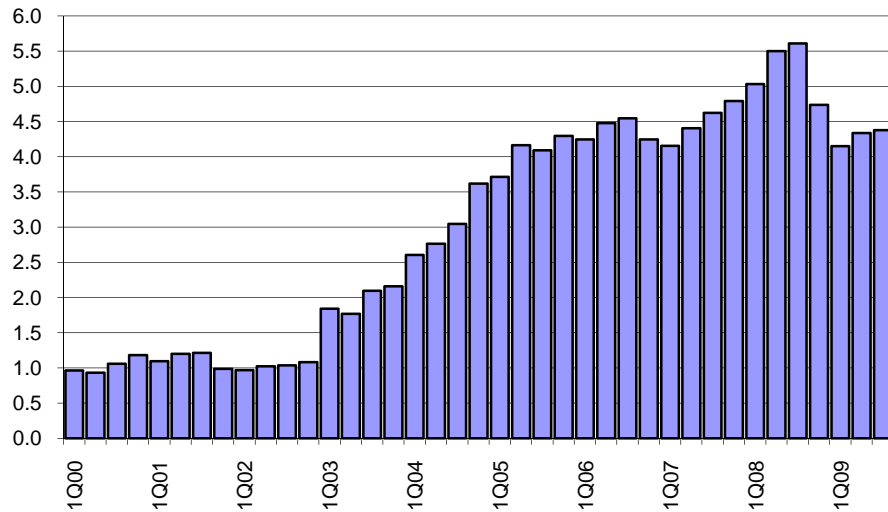
**Passenger Commission Costs**  
% of Passenger Revenue



**Maintenance Material Costs**  
Dollars per Block Hour



**Transport-Related Expenses**  
Total Costs (\$ Billions)



**Interest Costs**  
Average Book Interest Rate

